



MORE THAN *NOSTALGIA*

**Agricultural Heritage Collections in the
South West of England**

**Prepared by David Viner
for the South West Museums Council**

**South West
Museums
Council** 

Foot and Mouth Disease Outbreak

The fieldwork and research for this study was completed before the outbreak of foot and mouth disease made its considerable impact across the country from February 2001. This disease has been felt particularly severely in North Devon in the area that forms Part Three of this report. The changes in farming tradition that this study records can only be further accelerated by the effects of such widespread misfortune, adding a poignancy to the publication of this report in the spring of 2001.

Cover photograph:

A fine example of a Cotswold farm wagon in retirement at Upper Slaughter near Stow on the Wold, Gloucestershire. The wagon was owned by E.P. Brassey of Manor Farm, Upper Slaughter, and is now preserved in a private collection in North Staffordshire.

Photographer: Paul Felix (telephone 01285 831703)

MORE THAN *NOSTALGIA*

Agricultural Heritage Collections in the South West of England

**Prepared by David Viner
for the South West Museums Council**

Contents

	page
• Foreword	2
• Executive Summary	3
Part One	
• <i>The SWMC Agricultural Heritage Programme</i>	4
• Introduction	4
• Audit of Collections & the Museums Mapping Project	5
• Collecting policies and storage	6
• Presenting our rural past: the way forward	7
• Bibliography & Abbreviations	9
Part Two	
• <i>“The Tool Kit” : A curatorial assessment framework</i>	11
• Introduction	11
• Collections Care Range Statements	12
• Object Assessment Criteria	12
• Collection Development Options	13
• Summary	15
• Appendix One: Definitions of Significance & Quality	16
• Appendix Two: Collections Care Range Statements	17
• Appendix Three: Object Assessment Criteria	21
• Appendix Four: Collection Development Options	24
• Appendix Five: Potential use of the “Tool Kit”	26
Part Three	
• Case Study : The North Devon Museum Trust Agricultural History Collection	27
Part Four	
• <i>Gazetteer of Agricultural History Collections</i>	35

Foreword

“At no time has the future of agriculture and the future of the countryside itself been a more potent subject of general debate. Museums have a potential, if they are not reduced to simply recycling nostalgia, for influencing public opinion in an authoritative way, and helping to ensure that the decisions curators make for the future are the right ones.”

These words by Roy Brigden, as Keeper of the Museum of English Rural Life in the Rural History Centre at the University of Reading, date from 1993 but are still very much at the core of current thinking on the future of the rural life museums.

The same recognition of unrealized potential is the principal theme of the national survey on museums of farming and rural life at the beginning of the 21st Century, *Farming, Countryside & Museums* published by the Museums & Galleries Commission in March 2000.

Since then, the MGC has been replaced by Re:source: the Council for Museums, Archives & Libraries. In the Foreword to the Re:source *Manifesto* in July 2000, Chris Smith, Secretary of State for Culture, Media & Sport, wrote:-

“Re:source will be a force for change, advising Government and the museums, archives and libraries profession on all the key issues which collectively define their future. At its heart is a strong commitment to improve the experience of those who currently use our museums, libraries and archives and those who will do so in the future. This does not mean abandoning a commitment to stewardship and care, scholarship or research, but rather working creatively to build upon some of the exciting developments that are already taking place.”

The debate about the future role of rural life museums and the interpretation of agricultural issues by museums is thus both timely and extremely relevant, particularly for rural areas such as the South Western counties of England, where such museums are well represented.

Agriculture is vital to the economic well-being of the South West and the Agricultural Heritage Programme of the South West Museums Council is intended to provide a regional study of rural life museums in the context of the region's rural economy as a whole. A recent assessment for South West Museums Council of the economic contribution made by museums and galleries in the region shows a £50.7million annual contribution from the sector to the region's economy.

This report forms part of that Programme, providing an advocacy document with all-important data for an understanding of the needs, as well as the potential, of rural life museums and collections in the South West. Both Registered and non-Registered museums and collections are included, in both public and private ownership. It provides guidance on how to assess collections for their local, regional and national significance and good management, and so provides a key to unlock the considerable potential for understanding, enjoyment and appreciation of the countryside which rural life museums can offer.

We thank all those who have contributed to this report and offered useful advice, especially Rob Shorland-Ball, author of *Farming, Countryside & Museums*, and George Monger of Conservation & Museum Services. For access to their respective collections to pilot our data, we thank the Trustees of the North Devon Museum Trust; Emma Bond, Museums & Arts Officer for Torridge District Council; and Judy Mills, Collections Manager for Cotswold Museums Service. The late Chris Zeuner, Director of Weald & Downland Open Air Museum kindly allowed publication of survey results on his collections.

We would particularly like to thank David Viner, consultant for the Agricultural Heritage Programme and author of this report.

David Hill
Collections Development Director, South West Museums Council (April 2001)

Executive Summary

- This report has been prepared by David Viner on behalf of the South West Museums Council, as part of its Agricultural Heritage Programme within the Council's Forward Plan for 1999-2000.
- It sets out a regional overview of agricultural history and rural life collections in the South Western counties of England and includes an audit of current provision.
- As such, this report complements on a regional basis the national survey of rural life museums, *Farming, Countryside & Museums*, published by the Museums & Galleries Commission in March 2000.
- It also informs the South West Museums Council's continuing Museum Mapping Programme (first edition November 1999, latest edition November 2000), which has identified for the first time key strategic data on which future management of collections and museum provision throughout the region may be based.
- There are just over 200 fully or provisionally registered museums in the South West, but many more include agricultural collections large and small as part of visitor attractions in the region.
- Museums in the South Western counties attract around 5 million visitors each year and make a significant contribution to the region's economy.
- Over 14 million items in total are held by registered museums in the region. This survey identifies some 43,000 objects listed as of agricultural history significance, although the true total will be much larger than this figure, when social history and oral history objects are added, plus items held in private collections.
- The report provides important guidelines for the self-assessment of rural life collections by curators, managers and owners, which complements the South West Museums Council's *Collections Care Standards: a Self Assessment Pack for Museums*.
- Based upon Definitions of Significance and Quality, the Guidelines include Collections Care Range Statements, Object Assessment Criteria and Options Classification, combining to form a curatorial assessment framework, or "Tool Kit".
- The report has been funded and published by the South West Museums Council.

Part One

The SWMC Agricultural Heritage Programme

Introduction

The South Western counties of England have a rich heritage of agricultural history. The landscape is extremely varied and includes high moorland, open downland and wetland pasture.

This rich heritage forms a strong theme in many museums and collections throughout the region. The interpretation of farming and rural life takes many forms, but frequently it has been driven by a nostalgic view of “the way we were”, and based largely on objects and equipment from pre-mechanised farming practice.

Such nostalgia remains a powerful tool in museum presentation, but to remain relevant to the wider audiences of present and future generations, rural life museums must also address contemporary issues in the countryside. They must make their collections relevant to the wider view of landscape preservation and access, to changing public attitudes to the countryside as a leisure resource, as well as to changing farming practices and the economy of farming and the rural environment.

This is a difficult task. Agricultural history collections present a variety of complex and often expensive problems of conservation, maintenance and storage as well as presentation of objects that are frequently large in size and well-worn in condition.

The South West Museums Council has been addressing these and similar issues in its Agricultural Heritage Programme, as part of its Forward Plan for 1999-2000. This report is one outcome of that Programme, designed to assist museums in improving the care and presentation of their agricultural history collections throughout the region.

This regional approach has been designed to complement the national survey *Farming, Countryside & Museums*, published by the Museums & Galleries Commission in March 2000. Taken together, these national and regional assessments can assist museums in the region to find a context for their own development.

Much of what has been said in *Farming, Countryside and Museums* is central to rural life museums of the South West, and it is not repeated here. The two reports should be read together.

The SWMC Agricultural Heritage Programme has the following aim:-

- To audit the status, heritage merit and condition of agricultural collections in the context of representing a major industry and cultural foundation in the South West.

The objectives of the Programme include:-

For the Region as a whole, to identify:-

- Collections of national, regional and local importance in public and private ownership
- Areas of further development

For individual museums:

- To audit the condition and status of collections
- To inform collecting policies including contemporary collecting
- To identify examples of good collection care and interpretation projects.

- To identify areas for collaborative lottery bids and other development
- To raise awareness of the value of agricultural collections.

As a contribution to this Programme, this report seeks to serve the general aim and a number of the objectives and in particular to provide:-

- An audit of the number and status of agriculturally-based collections in the south west and an identification of principal museum collections
- A “Tool Kit” enabling those responsible for agricultural collections to assess and develop their collections
- Increased awareness of the issues affecting agricultural collections.

On this last objective, an Agricultural Heritage Symposium was organized in association with the Museums & Galleries Commission at the Royal Bath & West Society Showground at Shepton Mallet on 17th June 1999 and was attended by over 50 delegates. There have since been a number of other regional gatherings, including the Devon Curators’ Group at Princetown in November 2000.

Audit of Collections & The Museums Mapping Project

The audit was initiated by compiling a check-list of known collections in the region, using the MGC DOMUS returns, entries in Museums Yearbook, promotional literature and personal knowledge. A core group of 16 museum professionals working in the South West were consulted with draft lists of their respective areas; advice was taken and additional entries made.

In parallel, statistical information gathered for the publication of the South West Museums Council’s *Mapping Project* in November 1999 provided details of the quantity of objects held under the specific heading of Agriculture, plus an assessment of their local, regional and national importance. Both compilations have, therefore, been gathered with data provided by owners and practitioners.

The first phase of the *Mapping Project* was confined to museums either fully or provisionally registered under the MGC Registration Scheme, whereas the check-list also included privately-owned collections and those under other forms of management excluded from the terms of reference of the Registration Scheme.

Museum Mapping 2000 as the second stage of the Mapping Project not only updates entries but adds further information on collections outside the Registration Scheme, which is a significant factor in any assessment of the total agricultural history archive in the region. A recent survey in Devon alone, for example, included no less than thirteen private collections (Stanes 2000).

The combined audit forms Part Four of this report. It will require regular updating, but does offer an overview of the range of venues in the region which undertake some responsibility for the collection and interpretation of agricultural history.

The *Mapping Project* and the supporting *Collection Care Standards : a self assessment pack for museums* (also published by SWMC in 2000) provides the overall framework into which this study and, in particular, a Curatorial Assessment “Tool Kit” model may fit. In turn, the methodology and criteria were modelled upon *First Principles*, an earlier collections survey undertaken by the West Midlands Regional Museums Council in 1996, and updated as *Fast Forward* in 2000.

There is now, therefore, an extensive framework across at least two area museum council regions into which any assessment of any collection in either region may be fitted, and the data derived by such an assessment be made available for comparison both regionally and – in the case of agricultural history collections – against a national assessment and overview as well.

The *Museum Mapping Programme* includes a specific category for Agriculture. Other separate but inter-related categories include Social History and Oral History, in which some agricultural history items may well have been included. The data from the Agriculture category (second edition, 2000) can be summarized as:

- Number of museums with agricultural collections
 - Registered 80
 - Non-Registered 8
- Number of agricultural objects listed 42,991

Of this number, all registered museums recognised their collections as being of local significance, with 27 identifying groups of objects as of regional significance, and 5 as of national importance (this latter group with 42 objects). The geographical distribution of these registered museums is:-

Devon	25
Wiltshire inc. Swindon	15
Dorset	13
Cornwall	09
Gloucestershire inc. South Glos	09
Somerset	06
Bristol, Bath & North Somerset	03

Of the 200 museums in the South West that are Registered, 42% claim to have holdings of agricultural history amongst their collections. These returns also reflect the geographic distribution of all museums within the South West, where nearly half the total of over 250 museums (of which 200 are Registered) are in Devon and Cornwall.

Collecting Policies & Storage

The collecting habits of the past, the policy framework of present-day collecting and the long-term storage and display of all the consequent accumulated collections are three key themes in any study of rural life museums.

Farming, Countryside & Museums noted how many rural life museums have extensive collections, not all of them well documented or stored. Indeed, one contribution to the SWMC Seminar in June 1999 was entitled “*The barn is full – which way now?*” Registration requires a disciplined approach to collecting as part of an approved collecting policy, but this does not rule out overlaps and duplication; and there are, of course, many collections and collectors not bound by Registration procedures.

Although at the moment it may seem only an aspiration, there must be a future priority requirement to move towards shared or at least integrated collecting. Such an approach can begin at grass-roots level, for example within one county or one specific area, and there are already encouraging signs.

An example from elsewhere in the southern counties is being developed in West Sussex between the Weald & Downland Open Air Museum and the Amberley Museum. Here, detailed collection assessments at the former museum (such as Viner 2000a and 2001b) are helping to determine the future collecting patterns for rural history within the county (see Heywood 2000, 25).

Such an approach might be developed within any administrative area, such as a county (eg. Gloucestershire), or within a specific geographic and topographical region (eg. North Devon/ West Somerset/Exmoor), or even more locally between a couple of museums which already accept that their collecting policies overlap.

The development of a *Collection Policy Framework* for South West museums would provide a guide in constructing integrated collecting policies based upon:

- The significance of the existing collection(s) in a national, regional or local context
- Links to other national, regional and local collections
- Local farming methods, land form and land use
- Collecting and recording methods, and display and interpretation policies
- Gaps in the collection(s)

An even greater conundrum is the issue of large-scale storage shared between more than one museum authority, for which the potential still awaits detailed assessment in the region. An ability to pool both the human and financial resources for both management and maintenance would open up the potential for co-operative projects throughout the region and beyond.

Presenting Our Rural Past: The Way Forward

Farming, Countryside and Museums makes a very clear call for a revitalization of the rural life sector, to make it more relevant to present-day needs and to adapt to the contemporary environment in the countryside. This applies to all parts of the United Kingdom, although the need is perceived to be greater in England than elsewhere.

The rural life museums of the South Western counties should have a key role in this revitalization and adaptation. Such are their numbers and size of collections that the region should take a lead in this process, and this is one purpose of the SWMC Agricultural Heritage Programme.

The MGC report outlines five imperatives for action, all five of which are part of the Aims & Objectives of the SWMC Agricultural Heritage Programme:-

- To make connections and encourage networks and partnerships, between Registered museums and other collections, other organisations concerned with agriculture, the farming community and its representative organisations, and the agricultural machinery preservation movement.

Comment: the SWMC seminar in June 1999 began this process in the South West, which has continued. The *Mapping Project* has been extended to broaden the analysis beyond Registered museums.

- The creation of a database of the principal agricultural objects, archive and library holdings in the UK (the "Listing")

Comment: Part Four of this report, together with the Mapping Project, develops this process in the South West, and has been prepared in such a way that the region can contribute to any national "Listing" initiative.

- To recognise a community of national, regional and local rural life museums in each of the four UK countries, with strengths and specialisms identified and a support network in place.
- To promote the sharing of expertise, knowledge and skills.

Comment: the Programme provides a focus for such recognition and promotion.

- To develop the potential of rural life museums as centres for life-long learning of the historic and contemporary countryside and issues which relate to it.

Comment: the realization of this potential forms part of the overall aims of the South West Museums Council.

The concept of a *Distributed National Collection* is also welcomed. The identification of the most significant objects (individually or in groups) and the criteria that would lead to their selection would form part of the national database "Listing".

As a concept, this approach champions regional diversity, allows for objects of more than local significance to have a regional as well as national role, and offers the potential for financial support for the long term care and interpretation of such objects scattered throughout the region.

There are many examples of such objects in South Western museums. An obvious theme is the regional significance of farm wagons and carts, each displaying local characteristics determined by the topography and farming traditions of their area. The published works of James Arnold, Geraint Jenkins and John Vince in particular, and more recently David Viner, would provide useful guidance (see Bibliography).

Continuing the same theme, two key wagon and cart collections merit reference here, containing, in each case, examples of local, regional and (selectively) national significance, all of which can be expressed within the *Distributed National Collection* (DNC) concept:

- The collection of Devon types in the Tiverton & Mid Devon Museum (Viner 1999)
- The collection of Gloucestershire and South Midland types in the Cotswold Heritage Centre at Northleach (Viner & Mills 2000 and Harwood & Viner 2001)

Such regional waggon collections might well form a pilot study to promote the DNC concept further. The Accessible Agriculture Initiative, outline in the MGC report, is one constructive way forward to advance these imperatives and opportunities and must be welcomed.

In identifying "lead" regional museums for the development of the Initiative, the MGC report lists two for the South West, each of which is deserving of a more detailed assessment of its potential to serve such a regional role:

- Cotswold Heritage Centre at Northleach
(previously the Cotswold Countryside Collection)
- Somerset Rural Life Museum at Glastonbury

Part Four of this report identifies at least 113 rural life museums and collections in the South West. The Registered museums alone amongst this number have themselves estimated their holdings at around 43,000 objects, to which at least a proportion of the items listed under the Social History and Oral History categories in the *Mapping Project* should probably be added, plus the extensive holdings in private collections.

With the inclusion of these inter-related categories, there are potentially over 100,000 objects representing rural life and rural history in the museums and collections of the South West of England. It is the purpose of this report, and the other initiatives that support it, to make those objects better cared for, more accessible, and more relevant to the community as a whole and to residents and visitors in the South West in particular.

Bibliography

(Many other useful sources of reference are listed in Rob Shorland-Ball's report *Farming, Countryside & Museums*, published by MGC in March 2000)

Arnold, James 1969. *The Farm Waggons of England and Wales* (John Baker, London)

Arnold, James 1977. *Farm Waggons and Carts* (David & Charles, Newton Abbot)

Arnold, James 1979. *All Drawn by Horses* (David & Charles, Newton Abbot)

Brears, Peter 1998. *The Old Devon Farmhouse* Devon Books, Tiverton

Brigden, Roy 1982. "Where Will It All End?" *Museums Journal*, Vol.81 No.4, March 1982, pp.199-203

Brigden, Roy 1993. The Agricultural History Approach, in *Social History in Museums : A Handbook for Professionals* HMSO London, pp. 82-7

Finch, Sarah 2000. "The Countryside Alliance" *Museums Journal*, Vol.100 No.2, February 2000, pp. 28-9

Hart-Davis, Duff 2000. "Something Arty in the Woodshed" *The Independent, Weekend Review*, 25th March 2000, p. 14

Harwood, Ann-Rachael & Viner, David 2001. "Moving to Northleach: The Lloyd-Baker Collection of Gloucestershire Agricultural History" *Folk Life*, Vol.39, 2001, pp.7-24

Heywood, Felicity 2000. "The Pick of the Crop" *Museums Journal*, Vol 100 No 4, April 2000, pp. 24-5

Hill, Robin and others 1995. "Back to the Land" *Museums Journal*, Vol 95 No 1, January 1995, pp. 27-31

Jenkins, J Geraint 1961 and subsequent editions. *The English Farm Waggon : origins and structure* (University of Reading and David & Charles, Newton Abbot)

Kingshurst Consulting 2000. *A Local Cultural Strategy for Northern Devon 2000-2005*. 20pp.

Museums & Galleries Commission 1994. *Standards in the Museum Care of Larger & Working Objects* MGC, London

Museums & Galleries Commission 2000. *Farming, Countryside and Museums : Museums of farming and rural life at the beginning of the 21st century* MGC, London

South West Museums Council 1999 and 2000. *South West Museums Council Mapping Project and Museums Mapping 2000* SWMC, Taunton

South West Museums Council 2000. *The Economic Contribution of Museums in the South West*. SWMC, Taunton.

South West Museums Council 2000. *Collection Care Standards : a self-assessment pack for museums*. SWMC, Taunton

Stanes, Robin 1990. *The Old Farm : A history of farming life in the West Country*. Devon Books, Exeter.

Stanes, Robin 2000. *Devon Curators Group : Report on the Agricultural Collections Survey*

Vince, John 1975. *An illustrated history of Carts & Wagons* (Spur Books, Bourne End)

Viner, David 1992a. "We have ploughed Moving times for Agricultural History Collections" in the *South West Museum News*, No.15 for Spring 1992, pp.6-7

Viner, David 1992b. *Agricultural History Collections in Torridge: a feasibility study* Devon County Council and SWMC, Taunton

Viner, David 1999. "Devon waggon collection in safe hands" in *Heavy Horse World*, Autumn 1999, pp. 54-7

Viner, David 2000a. *Heritage Merit Assessment Report of the Waggon, Carts and Wheeled Vehicle Collection at the Weald & Downland Open Air Museum, Singleton, West Sussex*

Viner, David 2001a. *The North Devon Museum Trust Agricultural History Collection: A summary assessment* North Devon Museum Trust, Torridge District Council and SWMC Taunton

Viner, David 2001b. "Waggon designation a mark of quality in Sussex" in *Heavy Horse World*, Spring 2001, pp.48-51

Viner, David & Mills, Judy 2000. "Unlocking the potential of the Cotswold waggon collection" in *Heavy Horse World*, Autumn 2000, pp.26-9

West Midlands Regional Museums Council 1996 (updated 1998). *First Principles and Fast Forward 2000*. WMRMC, Bromsgrove.

Abbreviations

DOMUS	The Digest of Museums Statistics database held by the Museums & Galleries Commission (now Re:source)
MGC	Museums & Galleries Commission
NDMT	North Devon Museum Trust
Registration	The Registration Scheme developed and managed by the Museums & Galleries Commission (now Re:source)
SWMC	South West Museums Council

Part Two

“The Tool Kit”: A Curatorial Assessment Framework

Introduction

The aim of the “Tool Kit” is to provide support and guidance for curators/managers who wish to assess the status of their agricultural history collection(s) and to make management decisions about future developments.

The Curatorial Assessment framework should enable curators/managers to:

- Clarify the quality of existing collection care
- Clarify the context and scope of their collection(s)
- Identify the key features of individual collections and so draw out strengths
- Establish the local, regional or national significance for collections
- Identify links with other collections
- Provide a benchmarking and audit framework, linked to Best Value requirements
- Provide an assessment of future options

The “Tool Kit” extends further the matrix collectively provided by the two editions of the *Mapping Project* and the supporting *Collection Care Standards: a self assessment pack for museums*, all published by South West Museum Council. Although there are inevitably subjective elements, it is intended as a package of objective criteria, a surveying tool informing the process to achieve structured management decisions.

Definitions of Significance of collections, viz. local, regional, national and Designated follow those identified in the first *Mapping Project* report as Definitions of Importance, subsequently developed as Definitions of Significance and Quality. (These expanded definitions are attached as Appendix One). This approach provides a basic framework around which all other assessment criteria may be constructed.

Three principal approaches are adopted, which together with the Definitions of Importance or Significance make up the “Tool Kit” :

- *Collections Care Range Statements*
- *Object Assessment Criteria*
- *Collection Development Options*

Together these are intended to build into an overall audit and assessment of collections in the region. In this way, a corpus of inter-related information can be accrued over time, building otherwise isolated and unrelated assessments of individual collections into an integrated body of information, available for a wide variety of collection management purposes.

Collections Care Range Statements

Range Statements are modelled upon the MGC *Standards of Care* approach, and provide a range of categories of assessment for both collections and services, where Levels of Care can be assessed for each activity. Six Levels of Care are identified, where Level 1 = a basic level and Level 6 = the best level of care.

As the *Mapping Project* has developed, each Range Statement has been expanded and refined (Appendix Two) with revised versions of each of the principal categories within the Collections Care Range:

- Environment
- Storage
- Housekeeping and Security
- Documentation

Assessing a collection against this Range is the first component in the “Tool Kit” approach.

Object Assessment Criteria

The criteria set out in Appendix Three are intended to focus attention on key areas of collection care and to provide a framework in which *individual objects* may be assessed on a like-for-like basis. By following the same criteria with other collections, a qualitative framework can emerge, building to a useful corpus of data.

A simple pro-forma accompanies the criteria. By physically checking each object and the records which accompany or pertain to it, a scoring may be achieved which when totalled provides comparative data for the objects in any defined collection.

The higher the score, the better the overall collection care of any one individual object. The scoring range extends between a low of 16 to a high of 70. This can be increased still further where multiple answers are possible eg. where an object possesses both an attached accession number label and is itself clearly numbered (06+04 = 10). Although presented in a manual format, this simple format may be reproduced in computerized form.

Some criteria will score a common figure, e.g. where all objects being assessed are stored in the same building under the same conditions, or all objects are displayed similarly in one particular exhibition gallery.

However, there will be variations, which should clearly show discrepancies in the collections management of any group of objects. An example might be the incomplete nature of the object photographic record, or an erratic programme of conservation care over a period of time.

In this way, any one key area of collection care may be identified as requiring attention and a response developed. This can be achieved as much for individual objects within the framework as for an overall assessment of any particular collection.

The criteria were tested on two sample collections:-

- **North Devon Museum Trust** where the agricultural history collection owned by the Trust has not been on public display for over twelve years. Instead, it has been held in store at three different locations (see Part Three). Two samples were undertaken totalling 30 objects from a total of 170 objects, the first on 17th February 2000 when the collection was held together in one store at Northam near Bideford, and again on 21st June 2000, after it had been moved to another store elsewhere in Torridge district. A 20% total sample was achieved.
- **Cotswold Heritage Centre, Northleach** where a 12% sample was undertaken, viz 14 of the 114 objects on display in the Seasons of the Agricultural Year outside gallery. This, of course, represents only a small

part of the total holdings of agricultural history both displayed and held in reserve store on this site. The assessment was undertaken on 10th March 2000.

Using pilot documentation in both cases, the scoring range extended from 16 up to a maximum of 69 (multiples apart) and the scores discussed below are based upon this range.

The results for the NDMT sample produced consistent scoring within the range of 35 and 46, an average score of 40.6. The Northleach sample produced a scoring range between 39 (a loan object) and 55 (a conserved object documented in some detail), an average score of 45.5.

Although these samples are small in statistical terms, they nevertheless validated the exercise, and clearly revealed relative strengths and weaknesses in each collection. The higher average score for Northleach reflects objects on display.

Based on these pilot studies and advice and comments from other specialists, the criteria were refined and expanded to take other additional issues or options into consideration. As a result, the framework as shown (in Appendix Three) ranges from a minimum score of 16 to a maximum score (multiples apart) of 70. There are obvious benefits for benchmarking and other assessment requirements.

Validating a collection against these Object Assessment Criteria is the second component in the “Tool Kit” approach.

Collection Development Options

This options classification is intended to provide a framework in which important (and frequently difficult) decisions can be made on the future shape and content of collections held at and/or owned by a museum. Traditionally, the potential diversification of collections which had previously been held to consist comprehensively of only one category (the “core” collection) has generally been a difficult subject for museum management to address. With the concept of rationalisation increasingly in fashion pressures can only increase.

Such classification is one of the ways in which a greater flexibility may be introduced into the overall management of collections. Its use requires a staged approach, incorporating:

- Assessment, object by object
- Approval(s) of managing bodies
- Consultation
- Action, which may be phased over time

The following principal criteria of significance object-by-object were taken into account in preparing the option classification:-

- Type, date, and general historical significance
- Significant object structural features and details, including rarity value
- Relevance to the overall aims (in general) and the collecting area (in particular) of the museum
- Details of provenance, including supporting documentation
- Ownership including gifts, loans or bequests
- Conservation condition, including the potential for remedial conservation
- Degree of restoration (of whatever quality) which the object has undergone since the end of its working life

In proposing these options, it is a fundamental requirement that any changes in a museum’s holdings should be undertaken in accordance with the *Guidelines on the ethics and practicalities of disposal* published as Ethical Guidelines No.2 by the Museums Association in June 1996.

One advantage of a comprehensive approach for any given collection or group of objects is that a museum would thus have the advantage of assessing a specified part of its entire collection(s) at one time and thereby avoid the problems of piecemeal assessment over a longer period.

The Options A to F are set out in Appendix Four.

The circumstances of individual museums will vary. For example, Options B, C and D are shown as separate categories of object use, although the degree to which this discrimination is applied will vary according to the circumstances of any one museum.

This separation of Option D reflects the specific function of eg. open air museums or of collections set in the context of other activities eg. a farm park, where there is an opportunity to interpret the site as fully as possible via the displays laid out within it. In this sense, both Option B and Option D may have specific functions which other forms of museum presentation do not have.

In terms of documenting this process, the sequences to be followed in any or all of the options should include recording, as a minimum by photographic record and the production of basic inventories. Options C and D would require the creation of separate schedules or catalogues of objects and Option B a more detailed schedule as required by eg. Health & Safety legislation etc.

Only Option A would require full documentation procedures, as befits the core collection of the Museum; as such only the objects in this category would therefore be fully accessioned into the collections.

Assessing a collecting against these Options is the third component in the “Tool Kit” approach.

In a recent case-study, this options classification was introduced as part of a collections merit assessment of the waggons, carts and wheeled vehicle holdings at the Weald & Downland Open Air Museum at Singleton in West Sussex (Viner 2000a). For a group of 48 individual objects, the classification produced a breakdown of:

Option A	52%
Options B to D	33%
Options E & F	15%

enabling a range of specific recommendations, described a “honest and realistic”, to be made on an object by object basis, which will determine the future use and level of care of each object in this particular collection of this particular museum.

As a consequence, the core collection (Option A) has been identified as just over half the total current object holding, which therefore clarifies the key areas for allocation of scarce present and future resources, in order to achieve appropriate levels of collections care for this core group of objects. This assessment stage, therefore, informs the approval, consultation and implementation stages which follow.

Summary

Each of the three principal components of the “Tool Kit” may be used in isolation, although the accumulated evidence of the combined approach offers greater comparative data.

It is suggested that assessments should be undertaken in sequence as listed; certainly the Collection Development Options model can only be used satisfactorily on the basis of data obtained by other assessments.

Thus equipped, the curator/manager/assessor is able to make informed future management decisions affecting those collections which have been assessed, extending from the individual object to the whole collection or group of objects. The potential range of development options is set out in Appendix Five.

In this way, South West Museums Council seeks to encourage improvements in the care of collections in the region which taken together represent an important resource of agricultural history and so ensure that those collections remain relevant to the study and enjoyment of agricultural history in the South West of England and beyond, both now and in the future.

Appendix One: Definitions of Significance & Quality

The assessment of collections as of *General, Local, Regional* and *National* significance has been made by museums themselves using definitions in the table below. Collections do not necessarily meet all criteria but are placed in the broad category where they fit most comfortably.

A collection can be assigned significance, and A, B, C or D for quality, by its governing body.

Significance	Definitions	Key indicators	Quality, A, B, C or D
General Significance	A collection that has been amassed for attraction of paying visitors, or by an individual collector. Whilst such collections may not have been collected to record an area's culture or history they are interesting and sometimes can contain important elements, or represent a serious interest. The museums and attractions that hold them contribute to the regional economy by attracting visitors and employing staff.	<ul style="list-style-type: none"> ➤ Has not been collected to represent local, regional, or national aesthetic, cultural or historical values. ➤ Amassed for commercial or personal interest ➤ The grouping of objects will generally follow a theme 	<p>D = Over 50% not matching A, B or C criteria</p> <p>C=</p> <ul style="list-style-type: none"> • Well documented provenance • Reasonable range of representative objects with identification • Collection Policy <p>B =C+</p> <ul style="list-style-type: none"> • Verified quality • Or verified rarity • Associated research <p>A =C+ B +</p> <ul style="list-style-type: none"> • Full range of representative objects • Or verified uniqueness • Published research
Local	For a geographically or politically close community. This can equate to parish boundaries, although some may consider county to be local. There is also the case where communities straddle or are near political boundaries, where often they choose to be defined by geographical rather than political confines.	<ul style="list-style-type: none"> ➤ For community life ➤ Of local aesthetic, scientific or historical importance ➤ Of local significance for contemporary life, culture or history ➤ Of local significance for the study of humanities, art, science or technology 	Repeat ABCD
Regional (including sub-regional)	Those collections that represent the natural, historical or cultural environment, of the South West of England, as defined by the DTI, or sub-regions (county, city, historic political or geographical regions) within the DTI boundaries. Such collections may also form a continuum (with neighbouring collections) across the DTI boundaries.	<ul style="list-style-type: none"> ➤ Of regional aesthetic, scientific or historical importance ➤ Of regional significance for contemporary life, culture or history ➤ Of regional significance for the study of humanities, art, science or technology 	Repeat ABCD
National	For the United Kingdom	<ul style="list-style-type: none"> ➤ Of national aesthetic, scientific or historical importance ➤ Of significance for contemporary national life, culture of history ➤ Of national significance for the study of humanities, art, science or technology 	Repeat ABCD

Appendix Two: Collections Care Range Statements

Environment Range Statements

<p>1</p> <ul style="list-style-type: none"> <input type="checkbox"/> awareness of preservation of collections as a basic function of the museum 	<p><i>It is not understood that factors such as light, moisture content of air and temperature can damage many objects, so no attempt is made to measure these. Building may provide basic protection against weather, but some objects may be out of doors [NB for large objects this may be unavoidable]. Examples of decay, eg. rot, rust, mould, fading in evidence but few actions taken to prevent them.</i></p>
<p>2.</p> <ul style="list-style-type: none"> <input type="checkbox"/> some understanding of museum environment issues 	<p><i>Some understanding that light levels, moisture and temperature can cause damage to objects. Some simple attempt to prevent extreme damage eg. covers on books or objects in simple cases. No systematic monitoring or control.</i></p>
<p>3.</p> <ul style="list-style-type: none"> <input type="checkbox"/> broad understanding of issues <input type="checkbox"/> spot monitoring of RH, T, lux, UV <input type="checkbox"/> data is collected <input type="checkbox"/> suitable materials used for new displays 	<p><i>General understanding by staff that light and fluctuating RH and temperature will damage objects over time in museums. At least one member of staff is aware of how various material types will be affected. Spot readings of RH, temperature and light are taken and recorded. Access to continuous monitoring devices; basic maintenance of equipment is understood. Some understanding that materials used to construct cases, shelves etc can emit corrosive vapour-causing damage.</i></p>
<p>4.</p> <ul style="list-style-type: none"> <input type="checkbox"/> regular monitoring and recording of RH, T, lux, UV <input type="checkbox"/> control maintained at acceptable level across 50% of museum <input type="checkbox"/> conditions required for specialist collections identified <input type="checkbox"/> records maintained 	<p><i>Regular monitoring takes place and continuous monitoring devices are in use in parts of the museum. The data is recorded systematically with associated information such as location and outside weather conditions. It is understood that some objects or material types may require conditions other than those easily achieved by basic environmental controls. Care taken to build cases or fittings and mount objects with appropriate tested materials; suspect materials sealed.</i></p>
<p>5.</p> <ul style="list-style-type: none"> <input type="checkbox"/> full monitoring programme for stores and galleries in place <input type="checkbox"/> control maintained at acceptable level across 75% of museum <input type="checkbox"/> conditions required for specialist collections 75% complete <input type="checkbox"/> records interpreted 	<p><i>Enough environmental data has been collected to explain how the building performs and how it, and services such as heating, could be modified to improve control; this includes special conditions for certain object/material groups. ¾ of identified improvements, eg. insulation, dehumidifier installation etc have been achieved. A member of staff has responsibility for monitoring and controlling programmes, interpreting data and communicating findings to other staff. Specialist condition surveys commissioned to establish further environmental needs.</i></p>
<p>6.</p> <ul style="list-style-type: none"> <input type="checkbox"/> data informs planning and budget <input type="checkbox"/> control maintained at acceptable level across 90% of museum <input type="checkbox"/> conditions required for specialist collections 90% complete <input type="checkbox"/> records maintained and acted on <input type="checkbox"/> assessment of pollution risks 	<p><i>Full monitoring programme with planned reviews and upgrades, which could include exploring use of pollutant monitors. Environmental data informs decisions on improvements or maintenance to buildings. Building adaptation and control measures provide a stable environment most of the time. Zoning, micro-climates etc have been put in place if appropriate. All materials used in museum are assessed for pollution risk.</i></p>

Storage Range Statements

<p>1.</p> <ul style="list-style-type: none"> <input type="checkbox"/> recognition of need to find storage for objects not on display 	<p><i>No dedicated storage area: objects stored in any space available: on shelves, under tables or in cupboards also used for other types of stored material (cleaning agents, shop stock, DIY materials etc) that could damage objects. No distinction between objects and junk, so rummaging can damage objects. Objects stacked against each other without suitable packing.</i></p>
<p>2.</p> <ul style="list-style-type: none"> <input type="checkbox"/> storage area identified <input type="checkbox"/> awareness of problems or hazards 	<p><i>A room, cupboard, attic or cellar is identified but still suffers from lack of organisation, clutter and overcrowding. Daylight not excluded. Often no controlled access. Objects not given priority so space used as dumping ground. No plan of store; objects stored in any available boxes or containers with no label to aid location or identification.</i></p>
<p>3.</p> <ul style="list-style-type: none"> <input type="checkbox"/> planned storage <input type="checkbox"/> safe access to objects <input type="checkbox"/> shelving and work surface <input type="checkbox"/> protection from dust and daylight <input type="checkbox"/> staff trained to pack objects <input type="checkbox"/> conservation-grade packing for objects at risk <input type="checkbox"/> controlled access <input type="checkbox"/> eating, drinking, smoking banned 	<p><i>Storage areas may still be poor-quality building or part of building, but effort is made to keep it only for museum objects. Planned approach taken to physical layout and location of object/collection type, but store may be over-crowded. Relatively safe access to objects; flat surface available to unpack items. Simple measures such as dust sheets over shelf or racks and conservation grade boxes protect vulnerable objects from extreme conditions. Simple environmental monitoring and control. No food, drink or smoking permitted in store.</i></p>
<p>4.</p> <ul style="list-style-type: none"> <input type="checkbox"/> conservation-grade packing <input type="checkbox"/> inert store furniture and materials <input type="checkbox"/> random condition checks <input type="checkbox"/> regular housekeeping <input type="checkbox"/> supervised study area 	<p><i>Use of conservation-grade packing (and pallets for large objects) throughout. Inappropriate furniture materials, such as chipboard, are sealed. Store included in cleaning programme and regular condition/pest checks. Continuous supervision of researchers in study area.</i></p>
<p>5.</p> <ul style="list-style-type: none"> <input type="checkbox"/> well-organised indoor storage sufficient for current collection <input type="checkbox"/> individual objects easily retrievable <input type="checkbox"/> store location records and plan <input type="checkbox"/> selective condition checks <input type="checkbox"/> objects not on floors or in aisles <input type="checkbox"/> adequate space for largest objects 	<p><i>Maximum use of space to create very clean and uncluttered store for which a member of staff has responsibility. Well-marked boxes in conjunction with location plans make retrieval of individual objects fast and safe. Annual audit process and regular systematic condition checks as part of integrated housekeeping/collection care plan. All causes of potential physical damage are dealt with eg. padding of shelves where appropriate.</i></p>
<p>6.</p> <ul style="list-style-type: none"> <input type="checkbox"/> objects stored in accordance with MGC Standards of Collections Care <input type="checkbox"/> large or heavy objects easily moved <input type="checkbox"/> stores included in integrated cleaning programme and disaster response plan <input type="checkbox"/> quarantine for incoming objects <input type="checkbox"/> separate study area <input type="checkbox"/> storage materials upgraded <input type="checkbox"/> identified space for expansion 	<p><i>Materials used for storage furniture and fitting out are inert and have been tested. Stores covered by collection care plans and systems, e.g. monitoring, security and disaster response. Separate quarantine area to prevent infestation from recent acquisitions. Systematic condition checking programme in place; programmed replacement of conservation packing materials where appropriate eg. replacement of buffered card boxes. Sufficient volume for future acquisitions at current rates for next 15 years.</i></p>

Housekeeping & Security Range Statements

<p>1.</p> <ul style="list-style-type: none"> <input type="checkbox"/> some cleaning <input type="checkbox"/> outer doors and gates locked 	<p><i>Little understanding that most catastrophic damage to objects is caused by people, often accidentally. Very little cleaning of spaces or objects or even totally inappropriate cleaning which may cause damage by excessive abrasion or aggressive chemicals. Attention seldom paid to pest damage. Front doors are locked and gates padlocked but there may be little other security.</i></p>
<p>2.</p> <ul style="list-style-type: none"> <input type="checkbox"/> basic understanding of object handling <input type="checkbox"/> regular cleaning of public spaces <input type="checkbox"/> occasional inspection for pests <input type="checkbox"/> doors, windows locked and secured 	<p><i>Some care taken when handling objects but there may still be inappropriate cleaning of objects. Cleaning of public spaces may not include more vigorous spring-cleaning. Occasional treatment of woodworm, or other common pest infestations. Care is taken to fit high quality locks and to provide additional security such as bolts and window locks.</i></p>
<p>3.</p> <ul style="list-style-type: none"> <input type="checkbox"/> staff trained in object handling <input type="checkbox"/> programmed cleaning <input type="checkbox"/> knowledge of museum pests <input type="checkbox"/> specialist advice taken <input type="checkbox"/> appropriate basic security 	<p><i>Staff trained to avoid risks to objects through inappropriate holding, non-use or use of dirty gloves, inappropriate cleaning and dangerous carrying methods. Regular cleaning includes dead spaces. Advice taken on pest management and cleaning. Recognition of pests which can affect the range of museum objects; ad hoc inspections and use of traps. Regular inspection of objects entering building. Identified need to draw up disaster response plan. Basic understanding that building needs to be assessed for environment and security. Appropriate physical and alarm measures in place.</i></p>
<p>4.</p> <ul style="list-style-type: none"> <input type="checkbox"/> training in basic object cleaning <input type="checkbox"/> pest monitoring and identification <input type="checkbox"/> specialist advice followed up <input type="checkbox"/> basic risk assessment undertaken <input type="checkbox"/> emergency response phone list 	<p><i>Following specialist advice from a conservator, staff trained in basic object cleaning (not restoration). A member of staff has responsibility for pest monitoring programme. Simple risk assessment throughout museum also informs security procedures. Emergency call out lists kept up to date and circulated, including holiday cover.</i></p>
<p>5.</p> <ul style="list-style-type: none"> <input type="checkbox"/> integrated cleaning/care programme <input type="checkbox"/> vulnerable objects identified <input type="checkbox"/> regular risk assessment <input type="checkbox"/> recommended security in place <input type="checkbox"/> emergency plan 	<p><i>Full cleaning programme in place; appropriate cleaning of objects following advice from conservator. Quarantine area available for new objects. Regular risk assessment undertaken for whole museum; security measures implemented following specialist advice. Emergency plan with stocks of equipment and materials available.</i></p>
<p>6.</p> <ul style="list-style-type: none"> <input type="checkbox"/> integrated housekeeping and pest management programme <input type="checkbox"/> annual building and service check <input type="checkbox"/> full security protection <input type="checkbox"/> disaster response plan with stocks, rehearsals and regular review 	<p><i>All programmes inter-related eg. cleaning is integral part of pest prevention. Appropriate staff trained in cleaning techniques, handling and packing objects. All cleaning materials and packing materials approved. Trained staff undertake or manage annual review of building and services eg. gutters, roofs, electrical systems etc. Security provision addresses all identified risks; achieved through alarm and key systems, supervision etc; reviewed regularly. Disaster response plan reviewed annually and tested; staff trained in respective roles. Response equipment stocks maintained and checked.</i></p>

Documentation Range Statements

<p>1</p> <ul style="list-style-type: none"> <input type="checkbox"/> objects listed 	<p><i>Little documentation beyond listing. No knowledge of or inclination to use systematic procedures.</i></p>
<p>2</p> <ul style="list-style-type: none"> <input type="checkbox"/> basic understanding of documentation <input type="checkbox"/> awareness of major backlogs 	<p><i>Some records are kept, eg. objects are listed, but records are incomplete, unmethodical and probably not cross-referenced for information retrieval. Accession Registers may not be of archival quality. Objects are not labelled with their unique identifying number. No planned work to upgrade documentation.</i></p>
<p>3</p> <ul style="list-style-type: none"> <input type="checkbox"/> core SPECTRUM in use <input type="checkbox"/> staff trained in SPECTRUM procedures <input type="checkbox"/> loans audited <input type="checkbox"/> records of all de-accessions <input type="checkbox"/> documentation plan for backlogs <input type="checkbox"/> retrospective work in progress 	<p><i>Records are kept in a systematic way. Written confirmation of transfer of title, signed by the former owner, is obtained for all new acquisitions. Objects are labelled with their unique identifying number, relating each object to the information about it. Entry, location and exit records are kept. Records either cross-referenced by location list, subject/donor index or on computer. Programme to trace lenders and convert permanent loans to fixed-term renewable basis. Where records are incomplete, a realistic plan is produced and implemented to tackle the backlog.</i></p>
<p>4</p> <ul style="list-style-type: none"> <input type="checkbox"/> documentation procedural manual <input type="checkbox"/> retrospective documentation 60% complete <input type="checkbox"/> records for key collections upgraded <input type="checkbox"/> inventory controls in place <input type="checkbox"/> documentation work included in forward plan 	<p><i>New acquisition records are kept up to date, and at least half of earlier inadequate records have been upgraded. All provenance and process information (eg conservation, research, exhibition) is correlated to accession information. Instruction sheets or manual cover all procedures (offered gifts, accessioning, loans, marking etc). Documentation backlog plan is correlated to the museum's forward plan, with allocation of budget and personnel; annual targets are set and met.</i></p>
<p>5</p> <ul style="list-style-type: none"> <input type="checkbox"/> wide range of SPECTRUM in use <input type="checkbox"/> retrospective documentation 80% complete <input type="checkbox"/> programme of upgrading information <input type="checkbox"/> procedural manual is part of CMP 	<p><i>All 20 SPECTRUM procedures are followed wherever appropriate. Materials and storage of records are designed for long-term preservation. Detailed records are kept; significant collections are prioritised for information upgrading. Procedural manual forms part of Collections Management Plan.</i></p>
<p>6</p> <ul style="list-style-type: none"> <input type="checkbox"/> full and complete documentation <input type="checkbox"/> collections audit programme 	<p><i>All documentation backlogs cleared. Documentation systems and software are regularly reviewed; upgrading is planned and budgeted.</i></p>

Appendix Three : Object Assessment Criteria

(Note: multiple scoring is possible e.g. an object may be both physically numbered and carry a readable tie-on label. The scoring is thus 6+4 = 10)

- **Physical condition : storage**
 1. externally with no protection
 2. externally under cover
 3. internally, but overcrowded and/or badly stored
 4. internally with all round access and/or adequate shelving

- **Physical condition : environment**

(protection against infestation from eg. woodworm, bird droppings, etc)

 1. no protection
 2. partial protection
 3. within controlled environment

- **Physical condition : security**
 1. no secure protection
 2. partial protection, e.g. fence or zoning
 3. secure protection within controlled building

- **Physical condition : premises ownership**
 1. on site/in building not owned by museum body
 2. museum owns site/building in which the object is stored
 3. object is stored within museum premises
 4. object is within dedicated display area or reserve collection area (s) of museum building

- **Physical condition : object ownership**
 1. no known ownership
 2. ownership by museum body assumed but not documented
 3. item on loan, fixed period
 4. item on loan, indefinite
 5. ownership by museum body documented

- **Physical condition : object completeness**
 1. object is badly broken/deteriorated and key items are missing
 2. object has deteriorated but is substantially intact
 3. object is reasonably complete
 4. object is in overall good condition

- **Documentation : object recognition**

1. object has no allocated number
2. no label on object
3. tie-on label in poor condition
4. tie-on label, readable
5. waterproof label
6. object physically numbered/marked

- **Documentation : inventory**

1. no documentation
2. basic inventory/list only
3. detailed inventory, manual
4. computerised catalogue entry
5. fully integrated entry, e.g. with conservation records, location index, etc.

- **Documentation : photography**

(Note: the record is assumed to be “hard copy” but could alternatively be digital photography and/or computer stored records)

1. no photographic record
2. basic record only, stored elsewhere
3. photo housed as part of museum documentation records
4. full photographic record of object details, stored as part of main records and complete with negatives

- **Preservation: conservation treatment**

1. no remedial conservation undertaken
2. object forms part of passive conservation environment
3. object has been part of a fumigation programme more than five years previously
4. active remedial conservation during past five years
5. active remedial conservation during past five years with suitable records of earlier programmes of treatment
6. fully conserved with access to full conservation records

- **Preservation : restoration**

(Note 1 : this section assumes that unrestored objects have a collections management priority over restored objects, and that “unrestored” means in the condition in which the object came to the end of its working/useful life as an object/implement.

Note 2 : restoration might have been undertaken in order to use or demonstrate the object or merely for the personal interest of the owner or others)

1. object fully restored with nothing “original” surviving. No documentation of replacement parts, etc.
2. object fully restored with nothing “original” surviving, and fully documented including replacement parts, etc.
3. some remedial restoration (including re-painting) for aesthetic reasons only, but with no documentation
4. some remedial restoration (including re-painting) for aesthetic reasons only and fully documented
5. no restoration

- **Object significance : provenance**
 1. no known history
 2. basic provenance information, e.g. name of donor
 3. fully associated with named place

- **Object significance : associations**
 1. no record of use
 2. known history of use
 3. potential still exists to create oral or written records of use
 4. oral or written records of use already in museum collection

- **Object significance : manufacture**
 1. no knowledge of maker or supplier
 2. known maker or supplier but outside collecting area
 3. known maker or supplier local to collecting area
 4. local maker or supplier with other products in the museum/collection

- **Object significance : definition of significance**
 1. Local
 2. Regional
 3. National
 4. part of a Designated Collection

- **Presentation & Display**
 1. object has never been displayed
 2. object unlikely to be displayed in next 10 years
 3. object unlikely to be displayed in next 5 years
 4. object earmarked for display within 5 years
 5. object on display

Appendix Four: Collection Development Options

Option A :

A: The Core Collection

Objects are kept within the Museum Core Collection of objects, remaining un-restored (or not further restored), but are subject to a planned remedial conservation programme and are as fully researched and documented as possible.

Options B – D : Alternative Uses

B The Working or Use Collection

Objects are put to working use or demonstration use at or on behalf of the Museum. This option requires sufficient restoration to satisfy e.g. Health & Safety Requirements, functionality, and should take account of presentation issues of object presentation/restoration within the museum environment.

C Education and Handling Collection

Objects are included for educational reference material only, including loans. There is an implied deterioration through usage over time.

D Set Dressing

Objects are used as “set dressing” for the on-site activities of the museum, following the principle of ultimate disposal by the “back to nature” route.

Options E - F : Dispersal

To be adopted only in accordance with the requirements of the Registration of Museums Scheme and the Codes of Conduct of the Museums Associations, including a full recording process.

E Dispersal

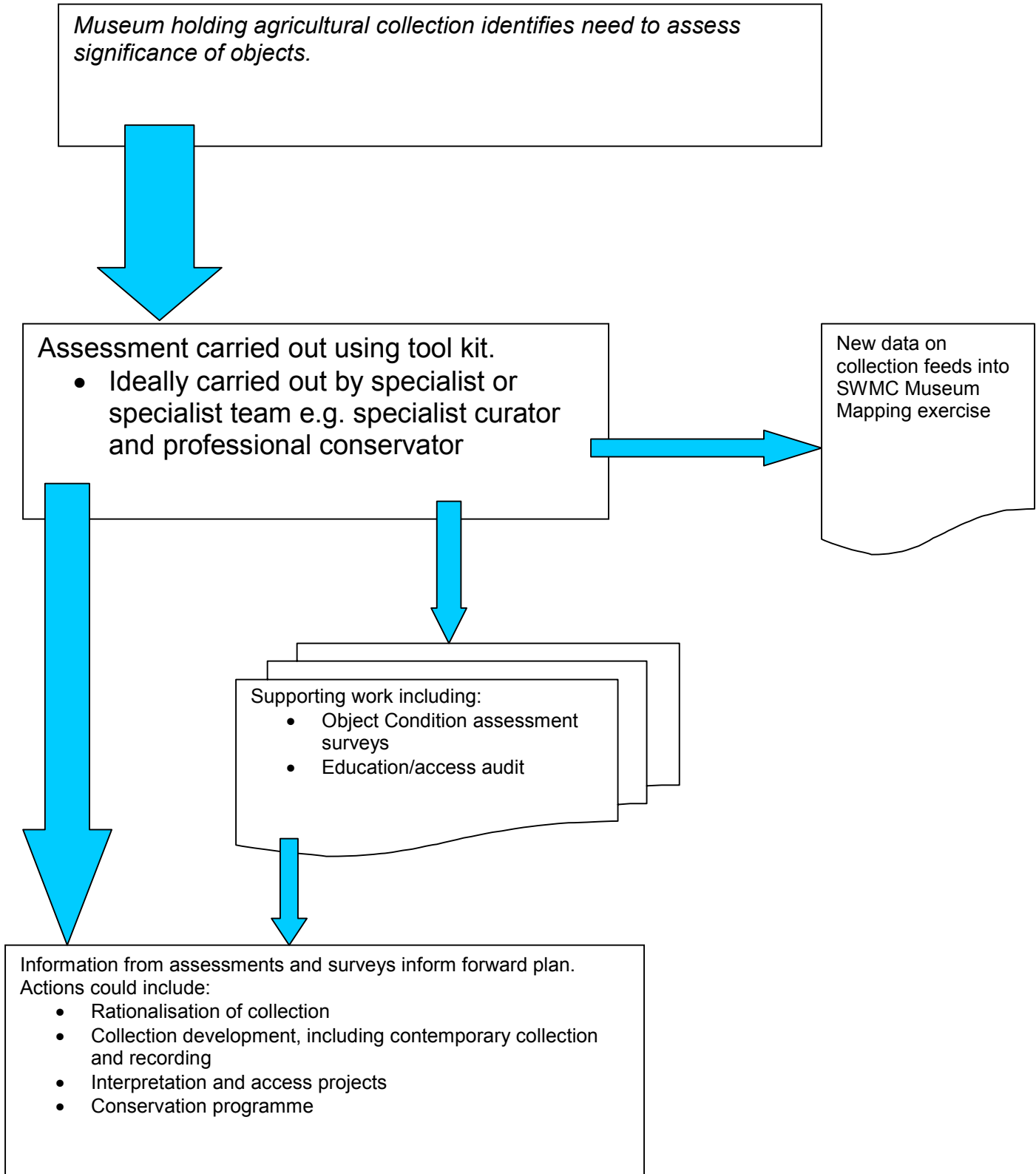
Objects are sold (privately or by auction) or given away to others.

F Disposal

Objects are disposed of, scrapped or cannibalised for reference material or restoration use.

Museum Name					Recording Date
Location					
	Object Description	Object Description	Object Description	Object Description	
	Object No.	Object No.	Object No.	Object No.	
<u>Physical Condition</u>					
Storage (score 1-4)					
Environment (score 1-3)					
Security (score 1-3)					
Premises Ownership (1-4)					
Object Ownership (1-5)					
Object Completeness (1-4)					
<u>Documentation</u>					
Object recognition (score 1-6)					
Inventory (score 1-5)					
Photography (score 1-4)					
<u>Preservation</u>					
Conservation (score 1-6)					
Restoration (score 1-5)					
<u>Object Significance</u>					
Provenance (score 1-3)					
Associations (score 1-4)					
Manufacture (score 1-4)					
Definition of Significance (1-4)					
<u>Presentation & Display</u> (score 1-5)					
TOTALS					

Appendix Five: Potential Use Of The “Toolkit”



Part Three

Case Study: The North Devon Museum Trust Agricultural History Collection

Why is this collection important?

- It is owned by the Trust which is a registered charity
- It is a valuable resource, containing objects of individual importance and regional significance, and well worthy of recognition as a “hidden asset”.
- Its development over a period of 25 years is typical of many similar collections
- It has benefited from funding for fumigation/passive conservation, storage/removal costs, basic inventory documentation and other forms of project funding from various sources on a number of occasions.
- It has in part been used as a working exhibit.
- However, it is currently in store with an uncertain future, and inaccessible for enjoyment and study.

The North Devon Museum Trust was established as a registered charity in 1973/4 following publication of the report *Prospects for our Past: proposals for a museum service for North Devon* (1973). From the outset, the project’s manifesto set out to “interest and enlist support from local authorities and from people both inside and outside the area for the provision of a good, modern museum service for the whole of North Devon”.

In “seeking to preserve North Devon’s heritage and character”, it hoped to promote:

- A central museum in Barnstaple
- A maritime museum in Bideford or elsewhere on the Torridge
- A museum of agricultural interest and industrial archaeology in the Torrington area.

The report, and the Trust which grew from it, acknowledged that “small but active museums” existed in Ilfracombe, Lynton and South Molton. To this should be added the Burton Art Gallery and facilities subsequently provided directly by Torridge District Council.

In the life of the Trust since 1973/4, these aspirations have developed as follows:-

- The Museums Service of North Devon District Council is based in Barnstaple, with the Museum of North Devon as its focus.
- The North Devon Maritime Museum opened at Appledore in June 1977 and is owned and administered by the North Devon Museum Trust in buildings owned by Torridge District Council
- An agricultural heritage collection was built up by the Trust and was displayed for a period at Alscott near Shebbear, between Torrington and Holsworthy. It has since been in store for over twelve years and is the principal subject of this case study.

Apart from its agricultural heritage collection, the primary objective and principal pre-occupation of the Trust (and of the majority of its members) has been the management and development of the Maritime Museum, which attracts c.7000 visitors per annum to Appledore. Its displays and facilities have won a number of awards.

Therefore, since the Trust’s formation, the pattern of museum provision in North Devon and Torridgeside has developed considerably. The two district councils for the North Devon region, North Devon District Council and Torridge District Council, each provide direct services as well as advisory services to other independent museums in their respective areas. There are also various commercial and quasi-commercial visitor and heritage attractions throughout the region, some of which attract substantial numbers of visitors.

Recently, the two councils have also jointly prepared and launched a *Local Cultural Strategy for Northern Devon 2000-2005*, an indication of co-operative endeavour with implications for museum development. This is the administrative and cultural context in which the Trust has been reviewing its options as owner and steward of its collection of agricultural history, for which its commitment dates back to its very early days as a Trust.

The Trust's involvement with this collection has a chequered history, not least in the several attempts to put it on display and – failing that – to ensure its adequate storage in various locations in the Torridge District Council area. During its time at Shebbear, the collection was drawn upon to provide working exhibits demonstrating manual, horse-drawn and mechanical equipment for films, heavy horse rallies and traction engine shows throughout the west of England.

The collection is currently in secure storage on Council-owned property in Torridge District. Previously, it had been kept in Northam, near Bideford (from February 1995 until March 2000), before that in a remote store made available by South West Water at Higher Goodacre (as part of the Roadford reservoir development) from December 1989/January 1990 until 1995, and originally at Shebbear.

Only funding support at various stages (including the allocation of staff time) from Torridge District Council, Devon County Council and the South West Museums Council has enabled such security to be offered to the collection. Left to its own devices, the Trust would not have been able to offer such protection and the collection would have deteriorated significantly over this period. This has been the fate of other collections which, for whatever reason, have fallen on hard times.

A survey of the state of development for rural life collections in the South West of England, with particular reference to the movement of the collections between owners and venues, was attempted in summary form in 1992 (Viner 1992a). Although brief, this survey highlighted the key issue of ownership in relation to permanence. Collections built up over time by individual collectors may or may not have local significance (many rural life collectors gather material over a wide area without reference to more formal museum collecting areas), and could easily be disposed of in response to the personal circumstances of the individual owner. A number of examples are given in the survey.

As a large agricultural county, Devon has inevitably fostered both collectors and collections. For the central and northern parts of the county, at least two significant collections provide good examples of the aspirations and problems which can arise. Both fall within the Torridge District Council administrative area. The first example is the collection examined in this case study, the other is a large collection dispersed at Winkleigh in mid-Devon in May 1988.

Roy Blackford owned the Ashley Countryside Collection but found it necessary to sell it off by auction in no less than 1,250 lots. He told *The Independent* that “everything to be sold came from within a 30-mile radius of the farm”. Mr Blackford's foreword to the sale catalogue is not only a personal valediction, but very relevant to the issues addressed in this study:

“The Ashley Countryside Collection was started by myself in 1972. As I had started farming with horses in 1949, my first interest was in the horse ploughs and the other horse equipment. The other collecting, from the immediate neighbourhood, followed because of the great interest shown by schools and the general public when we decided to open in 1974. The complete wheelwrights shop and the blacksmiths tools were again from the locality (Note: the wheelwrights shop came from the Combe family at Jacobstowe). To all those who purchase these lovely old things: we hope that you will enjoy owning them, treasure them and gain as much pleasure as my wife and I have had in sharing them and showing them to the thousands of people, particularly the children, who have visited us. The reason for the sale, after 14 years of opening to the public, is unfortunately due to poor health; we feel it is better to sell than to allow things to deteriorate in the buildings.”

The collection was duly dispersed and it must be assumed that the close relationship between the objects and this particular mid-Devon locality has been lost forever.

The early years of the North Devon Museum Trust collection were also characterized by similar dedication and commitment from private individuals. The majority of the objects still in the collection were gathered in the first decade of the Trust's life, ie. 1973-84, and largely through the initiative, enthusiasm and local contacts of its members. Most of the material was gathered directly from North Devon and North Cornwall provenances and mostly from private owners.

By agreement from the outset, items were kept at Philip Jenkinson's home at Alscott Farm, Shebbear, in remote north Devon countryside between Holsworthy and Torrington. Here a programme of time-consuming restoration of a number of the objects took place, with a team of local people including teachers, students, agricultural workers and retired engineers. Photographers and information were gathered on items in the collection.

At the same time, Philip Jenkinson was collecting not only on behalf of the Trust, but in the development of his own private collection of farming history. This collection was also stored at Alscott Farm. In 1976, in association with the Trust, Philip Jenkinson formally opened to visitors the Alscott Farm Museum at Shebbear, housed in various buildings at the farm. The museum was open "from noon to dusk every day" between Easter and the end of September. Visitor statistics have not been ascertained.

The museum remained open until difficulties over signposting and other access problems (see *Western Morning News* 29th April 1987) and later Mr Jenkinson's own retirement from the farm caused its closure in 1987/88. The actual date of formal closure (if such there was) has also not been ascertained.

A job creation scheme (under the Manpower Services Commission programme) enabled a cataloguing and identification project to be undertaken by the Trust on the agricultural collections at Alscott. Although progress was made, the project might have achieved more in terms of cataloguing the collections than actually proved to be possible. Whilst the collection was at Alscott, a summary check-list of contents was made by Bob Lewis on behalf of the then Area Museum Council for the South West.

Throughout the life of the Alscott Farm Museum as a public attraction, the Trust's collection remained on loan at Alscott and was exhibited alongside the Jenkinson collection. Neither collection was permanently exhibited in its entirety. Following Philip Jenkinson's retirement, the farm passed to his son Nigel, whose requirement for the return of the farm buildings for agricultural use forced the Trust to seek alternative storage arrangements from the Spring of 1989.

After numerous attempts to find a solution, the Trust was given a storage licence on an annual renewable basis from South West Water Plc to use a modern barn at Higher Goodacre, alongside the Roadford reservoir development. Devon County Council grant-aided up to £2,000 the removal of the collection from Shebbear to Roadford. It remained in store here from 1989/90 until 1995. A remote site, Higher Goodacre Farm had nevertheless been promoted as a potential home for a new "open air museum of west country farming", linked to the developing leisure and recreational amenities associated with the reservoir development. This project failed to materialize.

During this period, a detailed assessment of the collection was undertaken, including its contents, local and regional significance and its potential as the basis of a new museum presentation (Viner 1992b). The funding agencies for this study (Devon County Council and the South West Museums Council) were by now familiar with the collection's peripatetic history and were keen to seek a solution.

However, the assessment included a reference which – some nine years and two further temporary homes later – still applies:

- 6.4.1 The Trust is clearly in a dilemma; its storage arrangements (although generously supplied) must be regarded as only temporary, and the unsuccessful outcome – after over a decade of effort – of the Alscott Farm Museum project (for which there must have been high hopes initially) means

that the Trust's own agricultural collection has still to find its own permanent home for preservation and display.

- 6.4.2 Senior committee members of the Trust are entitled to feel that the collection represents a drain upon its resources of finance as well as enthusiasm and commitment.

A further complicating factor was the breaking up of part of the collection which had been shown at Shebbear. Following the closure of the Alscott Farm Museum and his retirement, Philip Jenkinson made arrangements (by sale or by loan – as a private transaction the details are not available) for display of some of his collection at another privately-run north Devon attraction, Farm World at Bodstone Barton, Berry Down near Combe Martin.

However, this venture too was forced to review its activities and in December 1991 was advertised on the market by Humberts Leisure as a going concern. At that time, the assessment concluded:-

- 6.5.2 Together with the collections already at Farm World, the future and long-term care in North Devon of the Jenkinson material must therefore be an additional cause for concern.
- 6.5.3 In assessing the various options for the future of the North Devon Museum Trust collection, the opportunity should not be lost to consider the incorporation of all or part of the Jenkinson collection in any potential solution.

Unfortunately, that opportunity proved out of reach and the Jenkinson "lifetime collection of farming and collectable by-gones" was dispersed by auction in 672 lots on 3rd December 1994. The North Devon Museum Trust, in the short notice available, was able to raise funds to purchase no more than six lots. As with the Blackford family collection at Ashley, the Jenkinson collection of rural life and social history of north and mid-Devon was scattered without record.

With the demise of the Ashley Countryside Collection (1988), the Alscott Farm Museum (1987-88) and Farm World at Bodstone Barton (1994), the north Devon region lost three of its principal rural life collections open to the public. Only one other collection of any significance, the Pidler Collection at the Milky Way visitor attraction near Clovelly remains open and accessible, and this too has been reduced (at least in promotional terms) as this particular visitor attraction has moved into the theme park arena.

It should also be noted that at least two other visitor attractions elsewhere in the South West that included agricultural history collections amongst their exhibits have reduced them (eg. Bicton Park at East Budleigh, south Devon in 1984) and in the case of Cricket St Thomas Wildlife Park near Chard (in 1990) sold them off completely.

The conclusion might be drawn from such experience that agricultural history collections in themselves have lost their "pulling power" to attract visitors, and have value for presentation only as adjuncts to a wider range of un-related attractions and activities grouped on one site. If this is indeed the case, the implications are clear for the presentation – at least as a discrete stand-alone exhibit – of the North Devon Museum Trust collection and others like it.

The Trust's collection consists of c.160-180 listed items. The exact number has varied as the initial inventory drawn up in the early days at Alscott could not discriminate sufficiently between the Trust's holdings and those of Philip Jenkinson. The checklist of objects prepared as part of the removal from Shebbear to Roadford in 1989/90 listed 164 entries of individual objects or groups of objects. A further list of 18 items represented problem objects for which alternative arrangements were then being made, or were proposed.

In fact, there have been five inventories compiled over a 25-year period, in an attempt to keep track of the various enforced movements of the collection, the first two at the time of the display at Alscott and, as part of its removal to Roadford in 1989/90. In 1992, two more detailed assessments followed. Firstly, David Viner put the collection into the wider context of agricultural history collections in the region and subjected the earlier

inventories to detailed analysis (Viner 1992b). This was followed – as recommended – by the cataloguing of the contents onto MDA cards and an overhaul of the object labelling system, by Alex Janes in the autumn of 1992, with funding support from South West Museums Council and Torridge District Council.

A further check was undertaken as part of the move from the Northam store to its present storage location in March 2000. As a result, as detailed an inventory as possible has been assembled accompanied by a photographic record and this is sufficient to allow an overall assessment of its contents and value for interpretation and enjoyment. These records are held by the Trust at its Appledore headquarters.

The 1992 assessments produced the following summaries:

- Less than 10% of the collection is made up of agricultural implements, either of types and/or by regional or national manufacturers commonly found in similar collections from other rural collections; as such, it is a fairly typical rural life assemblage. Random examples are a Bobby seed cleaner, a Massey Harris hay kicker and a Nicholson corn mill. (8% of total)
- There are, however, a number of local manufacturers' and/or suppliers' products represented, and these are of particular value and perhaps rather rare. Some examples include a chaff cutter by Tardrew of Bideford, a corn drill by Murch of Umberleigh, and seed/root drills by three makers, Balkwill of Holsworthy, Cockwill & Son of Meeth and W Isaac of Braunton. (11% total)
- There is an interesting but not unusual mix of land management tools and livestock implements, plus craftsmen's tools from the predictable activities of blacksmithing, wheelwrighting and (less usually and more specifically local) clay digging. Whether from locally made or nationally-supplied sources, smaller implements typically constitute a similar proportion of such collections. (37% total)
- Specific local traditions are represented in a relatively small proportion of the collection eg. cloam ovens and doors. (8% of total)
- Various social history (as distinct from agricultural history) items can also be identified, and perhaps represent legitimate preferences within the collecting tradition in which the objects were amassed eg. the funeral bier of 1935 from Sheepwash Church; some dentist's equipment; and various Bideford town features, such as the town stocks and a toll-board. (20% of total)
- Some architectural fittings were rescued from specific locations, and in terms of scale continue to represent a significant storage problem; obvious examples are a horse wheel from Abbotsham, a slaughterhouse bullock hoist and crane, and a Pelton water wheel. (2% of total)
- Mechanisation in farming equipment is relatively small in number, viz. a motor mower, a Danarm electric power saw, a barn oil engine, eg. and there are two tractors, a Mogul and an Allis-Chalmers. (4% of total)
- The wheeled vehicle collection (often the highlight in collections elsewhere) is modest but interesting : a hay trolley, a game cart and a butt cart – all representative examples. A four-wheeled farm waggon is also a good example of its type, built in Exeter and used locally albeit marked with an owner's name from a farm in central Somerset. (4% of total)
- In addition to all the characteristics so far noted, the collection boasts some unusual individual items. Portable equipment is interesting; two reedcombers, a mobile sheep dip (now missing) and a traveling farm crane. The threshing equipment and an apple crusher have a strong local flavour and so too does a good example of a Dartmoor hay sledge; these are all items for which a good provenance is particularly important. (6% of total)

At the same time in 1992, missing items were noted and a number of recommendations made on the potential for dispersal of various items on the collection; some of these transfers were subsequently completed. From the 1992 catalogue and inventory reviews, updated again in August 2000, a total of 19 objects from the schedule (11% of the total) were recorded as missing from the collection.

Very little has been added to the collection which, considering its peripatetic history in recent years, is both understandable and sensible. A donation by the bequest of local farmer Edward Charles Palmer was added in 1996 (ref.1996.63-67), and is interesting in that it represents typical contemporary farming equipment of the area: a Ferguson TE20 diesel tractor, a tractor box, a two-furrow plough, a harrow and a scuffle.

The collection has been used as a case study in this report because it typifies so many issues facing collections of this type, which – despite its apparent protection in the ownership of a trust and registered charity – is potentially at no less risk of dispersal and loss than other collections in private hands. It has also been featured in the national press as part of the South West Museums Council's promotion of its Agricultural Heritage Programme (Hart-Davis 2000). Further studies have also taken place (Viner 2001a).

Conservation of the collection has been a cause of concern throughout its existence. Some of the remedial work undertaken during the early days of Alscott might now be criticized as over-restoration, although relatively few objects from the Trust collection (as compared with the Jenkinson holdings) were affected. A serious attempt has been made to fumigate the collection at intervals, and this was last undertaken in 1997, at a cost of £2,700, shared between North Devon Museum Trust, South West Museums Council and Torridge District Council.

A summary SWOT analysis of the key issues surrounding the present circumstances of the collection includes:

Strengths

- The collection retains its identity and north Devon distinctiveness
- Basic catalogue, photographic record, location index and inventory analysis have all been achieved
- A fumigation programme has been maintained
- Although temporary, current storage arrangements are in local authority-owned property which is not under threat
- The collection consists of various categories of objects which could be allocated to different appropriate interpretative “uses”

Weaknesses

- The collection is static and marooned in temporary storage
- No permanent home has been identified either as a stand-alone collection or integrated with other project(s)
- Security remains a concern for storage on a remote site

Opportunities

- The potential of the collection to act as a focus for the interpretation of north Devon agricultural history remains strong. There is an obvious link with the Beaford Photographic Archive
- The continuing (although threatened) traditional nature of farming in north Devon
- Some of the background information on provenance of the objects is still obtainable, although this is a diminishing opportunity
- The Trust is amenable to options for interpretation of the collection and is open to proposals
- Diversification in the rural economy (and supporting grant opportunities) provides the potential for project development opportunities.

Threats

- Deteriorating condition of objects
- As an unseen asset, a declining interest in its welfare, which may be linked to a sense of collection's lack of relevance to contemporary agriculture
- The Trust's ability to care in the long term
- Loss of surviving provenanced information

Although it was suggested in the 1992 assessment that one potential future option for use of the collection might be long-term loan or disposal to other venues for exhibition purposes, the Trust did not accept this as the ultimate solution and the collection has remained substantially intact, with only a few minor loans in the intervening years. To this end, it should be noted that in its aims and objectives (as at December 1988), North Devon Museum Trust had accepted its continuing responsibility for the agricultural items, which were then still held at Alscott, with the intention "to provide premises for their storage, eventual display elsewhere, and for their preservation". This commitment has remained intact and its current Forward Plan (September 2000) states "the Trust's intention to store/conservé/display this collection at a suitable site at the earliest opportunity".

It is in this context that the collection has been revisited for the pilot study, together with one other collection, within this wider review. It was selected for the Object Assessment Criteria and 20% of the objects held in store were assessed. From a score of between 16 and 69, these 33 objects consistently scored within a range of 35-46, producing an average score of 40.6 on behalf of the collection as a whole.

Only many more returns from other collections will provide a fuller context for these results, but it is already clear that the care and maintenance policies adopted for the collection, despite the vicissitudes of several temporary stores and the unresolved nature of various loans, have held the collection in reasonable order.

In addition to management by the Trust, the support for the collection throughout its history from Torridge District Council (which was itself only formed in 1974) should be acknowledged. Much of the work of the North Devon Museum Trust has only been made possible by the financial support of the Council. The creation of its own museum officer post dates from 1991. This post, now Museums & Arts Officer, has been critical in providing guidance, curatorial advice and monitoring on behalf of the Council, not least in the care and maintenance of this collection.

North Devon Museum Trust was provisionally registered under the MGC Registration Scheme in 1991 and fully registered in October 1992. Torridge District Council's Museums & Arts Officer has served throughout this period as its Curatorial Adviser.

For the future, new ways of using this collection need to be found. A traditional presentation in gallery-type format, perhaps on the theme of contemporary as well as traditional agricultural practices and traditions of north Devon, still has its valid place in the scheme of things, but funding practicalities would almost certainly require such a presentation to form part of some other, wider enterprise. To this end, the wider funding opportunities linked to economic and cultural development in northern Devon need to be identified and assessed.

The collection (objects and associated information) may, therefore, be directly linked to rural diversity and regional regeneration, including tourism. In this project-based environment, northern Devon is as fortunate or otherwise as any other large rural area of the South West, with funding opportunities of various types, duration and scale. It is essential that such opportunities are not missed in the next, vital stage of the life of this collection.

As well as forming part of this regional study alongside various other recent regional collections and economic assessments from the South West Museums Council, there is now a national context for such an assessment

in Rob Shorland-Ball's national survey for the Museums & Galleries Commission : *Farming, Countryside and Museums*, published in March 2000.

With a clear focus upon the significance and relevance of the objects in the collection, their state of care and preservation, their interpretative potential and the management policies which must in future govern their use, now is the time to move forward and explore partnerships with other bodies not only in northern Devon but throughout the South West, in order to make accessible to best effect this particular collection as part of our wider rural heritage.

Part Four

Gazetteer of Agricultural History Collections

Data from SWMC Museum Mapping 2000 Survey and DOMUS database

Organisation: [Admiral Blake Museum](#)

Address Blake Street, Bridgwater, Somerset TA6 3NB
Contact Sarah Harbige
Tel No. 01278 456127
Registered? Registered
Governing Body Sedgemoor District Council
Collections Held The local and social history museum for Sedgemoor
No of Objects <30
Importance?

General	Local	Regional	National
0	100%	0	0

Organisation [Allhallows Museum](#)

Address High Street, Honiton, Devon EX14 8PE
Contact Derek Yates
Tel No. 01404 44966
Registered? Registered
Governing Body Allhallows Museum Trust
Collections Held Local history museum for the town and area
No of Objects 15
Importance?

General	Local	Regional	National
-	100%	-	-

Organisation [American Museum in Britain](#)

Address Claverton Manor, Bath BA2 7BD
Contact Judith Elsdon
Tel No. 01225 460503
Registered? Registered
Governing Body Trustees of American Museum
Collections Held Interpretation of social and community life
No of Objects 23
Importance?

General	Local	Regional	National
0	0	100%	0

Organisation [Ashburton Museum](#)
Address 1 West Street, Ashburton, Devon TQ13
Contact Jamie Broughton
Tel No. 01364 652648
Registered? Registered
Governing Body Ashburton Museum Trust
Collections Held Local history museum for the town and area
No of Objects 50
Importance?

General	Local	Regional	National
0	100%	0	0

Organisation [Athelstan Museum](#)
Address Town Hall, Cross Hayes, Malmesbury, Wiltshire SN16 9BZ
Contact Roberta Prince
Tel No. 01666 829258
Registered? Registered
Governing Body North Wilts DC/Malmesbury Town Council
Collections Held Local history museum for the town and area
No of Objects 90
Importance?

General	Local	Regional	National
0	100%	0	0

Organisation [Beaminster Museum](#)
Address Whitcombe Road, Beaminster, Dorset DT8 3NB
Contact Marie Eedle
Tel No. 01308 863623
Registered? Provisional
Governing Body Beaminster Museum Trust
Collections Held Local history museum for the town and area
No of Objects 74
Importance?

General	Local	Regional	National
0	90%	0	0

Organisation [Bickleigh Castle](#)
Address Bickleigh, Tiverton, Devon EX16 8RP
Contact Michael Boxall
Tel No. 01884 855363
Registered? Non-Registered
Governing Body Private Ownership
Collections Held Museum with collections including small agricultural objects
No of Objects -
Importance?

General	Local	Regional	National
-	-	-	-

Organisation [Bicton Park Gardens](#)
Address East Budleigh, Devon EX9 7DP
Contact not known
Tel No. 01395 568465
Registered? Non-Registered
Governing Body Bicton Park Trust Co
Collections Held includes the James Countryside Museum of agricultural implements and equipment (NB: a reduction sale in 1984 of some of the contents)

No of Objects -
Importance?

General	Local	Regional	National
-	-	-	-

Organisation [Blaise Castle House Museum](#)
Address Henbury, Bristol BS10 7QS
Contact David Eveleigh
Tel No. 0117 950 6789
Registered? Registered
Governing Body Bristol City Council
Collections Held Social history collections of the City's Museum Service

No of Objects 500
Importance?

General	Local	Regional	National
0	80%	20%	0

Organisation [Blandford Forum Museum](#)
Address Bere's Yard, Market Place, Blandford Forum, Dorset DT11 7HQ
Contact Dr P Andrews
Tel No. 01258 450388
Registered? Registered
Governing Body Blandford Forum Museum Trust
Collections Held Local history museum for the town and area

No of Objects 200
Importance?

General	Local	Regional	National
0	100%	0	0

Organisation [Bodmin Museum](#)
Address Mount Folly, Bodmin, Cornwall PL31 2HQ
Contact Stephanie Meads
Tel No. 01208 265631
Registered? Registered
Governing Body Bodmin Town Council
Collections Held Local history museum for the town and area

No of Objects >30
Importance?

General	Local	Regional	National
10%	90%	0	0

Organisation [Bradford On Avon Museum](#)
Address Bridge Street, Bradford Upon Avon, Wiltshire BA15 1BY
Contact Roger Clark
Tel No. 01225 863280
Registered? Registered
Governing Body Bradford upon Avon Museum Society
Collections Held Local history museum for the town and area
No of Objects 50
Importance?

General	Local	Regional	National
0	100%	0	0

Organisation [Bradstock Working Horse Farm](#)
Address Old Barns, Bredy Road, Burton Bradstock, Dorset
Contact Justin Mallinson
Tel No. 01308 897900
Registered? Non-Registered
Governing Body Private Ownership
Collections Held A working farm including a display of vintage farm machinery
No of Objects -
Importance?

General	Local	Regional	National
-	-	-	-

Organisation [Braunton & District Museum](#)
Address The Bakehouse Centre, Caen Street, Braunton, Devon EX33 1AA
Contact Kathy Lehan
Tel No. 01271 816688
Registered? Provisional
Governing Body Braunton & District Museum Trust
Collections Held Local history museum for the town and area
No of Objects >50
Importance?

General	Local	Regional	National
0	100%	0	0

Organisation [Bredy Farm Old Farming Collection](#)
Address Burton Bradstock, Dorset
Contact Not known
Tel No. 01308 897229
Registered? Non-Registered
Governing Body Private Ownership
Collections Held A comprehensive collection of historic farm and estate equipment, reputed to be "the largest collection in Dorset"
No of Objects -
Importance?

General	Local	Regional	National
-	-	-	-

Organisation [Bristol Industrial Museum](#)
Address Princes Wharf, Princes Street, Bristol BS1 4RN
Contact Andy King
Tel No. 0117 925 1470
Registered? Registered
Governing Body Bristol City Council
Collections Held Includes a small number of agricultural history objects principally a South Gloucestershire farm waggon from ?Oldbury

No of Objects -
Importance?

General	Local	Regional	National
-	-	-	-

Organisation [Brixham Heritage Museum](#)
Address Bolton Cross, Brixham, Devon TQ5 8LZ
Contact Philip Armitage
Tel No. 01803 856267
Registered? Registered
Governing Body Brixham Museum & History Society
Collections Held Local history museum for the town and area

No of Objects >70
Importance?

General	Local	Regional	National
0	100%	0	0

Organisation [Buckland Abbey](#)
Address Yelverton, Devon PL20 6EY
Contact Michael Coxson
Tel No. 01822 853607
Registered? Non-Registered
Governing Body -
Collections Held Historic site and building, with small display of agricultural implements in the linhay

No of Objects -
Importance?

General	Local	Regional	National
-	-	-	-

Organisation [Bude-Stratton Museum](#)
Address Bude Stratton Town Council, The Castle, Bude, Cornwall EX23 8LG
Contact Harvey Kendall
Tel No. 01288 353576
Registered? Registered
Governing Body Bude-Stratton Town Council
Collections Held Local history museum for the town and area

No of Objects 38
Importance?

General	Local	Regional	National
0	100%	0	0

Organisation [Chard & District Museum](#)
Address Godworthy House, High Street, Chard, Somerset TA20 1QL
Contact Barry Dillon
Tel No. 01460 65091
Registered? Registered
Governing Body Chard Museum Council
Collections Held Local history collection including agricultural history galleries;
specific collection on Denning of Chard implement makers

No of Objects -
Importance?

General	Local	Regional	National
-	-	-	-

Organisation [Cheltenham Art Gallery & Museum](#)
Address Clarence Street, Cheltenham, Gloucestershire GL50 3JT
Contact Steven Blake
Tel No. 01242 237431
Registered? Registered
Governing Body Cheltenham Borough Council
Collections Held The principal museum of the borough museums and gallery services

No of Objects 5000
Importance?

General	Local	Regional	National
0	100%	0	0

Organisation [Chippenham Museum & Heritage Centre](#)
Address Nos 9-11 Market Place, Chippenham, Wiltshire SN15 3HF
Contact Mike Stone
Tel No. 01249 705020
Registered? Registered
Governing Body Chippenham Town Council
Collections Held Local history museum for the town and area

No of Objects 140
Importance?

General	Local	Regional	National
-	100%	-	-

Organisation [Coach House Museum](#)
Address St George's Close, Langton Matravers, Swanage, Dorset BH19 3HZ
Contact Reg Saville
Tel No. 01929 423168
Registered? Provisional
Governing Body Langton Matravers Local History & Preservation Society
Collections Held Local history and industrial archaeology museum for the Purbeck area

No of Objects 119
Importance?

General	Local	Regional	National
0	100%	0	0

Organisation [Combe Martin Museum](#)
Address The Parade, Seaside, Combe Martin, Devon EX34 0AP
Contact Tim Cotter-Stone
Tel No. 01271 882636
Registered? Registered
Governing Body Combe Martin Museum Charitable Trust
Collections Held Local history museum for the town and area
No of Objects >100
Importance?

General	Local	Regional	National
-	60%	-	-

Organisation [Cookworthy Museum](#)
Address The Old Grammar School, 108 Fore Street, Kingsbridge, Devon TQ7 1AW
Contact Margaret Lorenz
Tel No. 01548 853235
Registered? Registered
Governing Body William Cookworthy Museum Society
Collections Held Local history collection for the South Hams, including an agricultural history gallery
No of Objects 410
Importance?

General	Local	Regional	National
0	80%	20%	0

Organisation [Coombes Cider Farm & Museum](#)
Address Japonica Farm, Mark, Highbridge, Somerset TA9 4QD
Contact Not known
Tel No. 01278 641265
Registered? Non-Registered
Governing Body Private Ownership
Collections Held Cider making and museum
No of Objects -
Importance?

General	Local	Regional	National
-	-	-	-

Organisation [Corfe Castle Museum](#)
Address West Street, Corfe Castle, Dorset
Contact Mr K Wollaston
Tel No. 01929 480415
Registered? Registered
Governing Body Corfe Castle Town Trust
Collections Held Local history museum for the town and area
No of Objects 45
Importance?

General	Local	Regional	National
0	100%	0	0

Organisation [Cotehele Quay Museum](#)
Address Cotehele Quay, St Dominick, Saltash, Cornwall PL12 6TA
Contact Peter Allington
Tel No. 01579 350830
Registered? Registered
Governing Body National Trust
Collections Held Preserved buildings and contents on the Cotehele Estate
No of Objects -
Importance?

General	Local	Regional	National
-	-	-	-

Organisation [Cotswold Heritage Centre](#)
Address Northleach, Gloucestershire GL54 3JH
Contact John Paddock
Tel No. 01451 860715
Registered? Registered
Governing Body Cotswold District Council
Collections Held A large collection of agricultural history, incorporating the Lloyd-Baker Collection from Gloucestershire
No of Objects >10000
Importance?

General	Local	Regional	National
0	25%	75%	0

Organisation [Crewkerne & District Museum](#)
Address The Heritage Centre, Market Square, Crewkerne, Somerset TA18 7JU
Contact Mr R Clark
Tel No. 01460 77079
Registered? Registered
Governing Body Crewkerne & District Museum Trust
Collections Held Local history museum for the town and area
No of Objects >30
Importance?

General	Local	Regional	National
90%	10%	0	0

Organisation [Cricklade Museum](#)
Address 16 Calcutt Street, Cricklade, Wiltshire SN6 6BB
Contact T Ramsden-Binks
Tel No. 01793 750756
Registered? Registered
Governing Body Cricklade Historical Society
Collections Held Local history museum for the town and area
No of Objects 100
Importance?

General	Local	Regional	National
0	100%	0	0

Organisation [Dairyland Farm World](#)
Address Newquay, Cornwall TR8 5AA
Contact not known
Tel No. 01872 510246 ie 510246
Registered? Non-Registered
Governing Body Private Ownership
Collections Held includes a heritage centre
No of Objects -
Importance?

General	Local	Regional	National
-	-	-	-

Organisation [Dartmoor Prison Museum](#)
Address HMP Dartmoor
Contact Brett Johnson
Tel No. 01822 890305
Registered? Non-Registered
Governing Body HM Prisons Board
Collections Held Agricultural collection from prison farm and locality
No of Objects <50
Importance?

General	Local	Regional	National
	100%		

Organisation [Dean Heritage Centre](#)
Address Camp Mill, Soudley, Gloucestershire GL14 2UB
Contact Kate Biggs
Tel No. 01594 822170
Registered? Registered
Governing Body Dean Heritage Museum Trust
Collections Held Collections interpreting the natural and human history of the Forest of Dean
No of Objects 750
Importance?

General	Local	Regional	National
0	100%	0	0

Organisation [Dewey Museum](#)
Address Warminster Library, Three Horseshoes Mall, Warminster, Wiltshire BA12 9BT
Contact Jack Field
Tel No. 01985 216022
Registered? Registered
Governing Body Warminster History Society
Collections Held Local history museum for the town and area
No of Objects 400
Importance?

General	Local	Regional	National
0	100%	0	0

Organisation [Dingles Steam Village](#)
Address Milford, Lifton, Devon PL16 0AT
Contact Richard and Anthea Sandercock
Tel No. 01566 783425
Registered? Non-Registered
Governing Body Private Ownership
Collections Held Exhibition of steam power, road transport and fairground art
No of Objects 50
Importance?

General	Local	Regional	National
-	100%	-	-

Organisation [Dorset County Museum](#)
Address High West Street, Dorchester, Dorset DT1 1XA
Contact Richard de Peyer
Tel No. 01305 262735
Registered? Registered
Governing Body Dorset Natural History & Archaeological Society
Collections Held Collections include an agricultural history gallery based upon the Skyrme collection; other items in reserve collections
No of Objects 1000
Importance?

General	Local	Regional	National
0	100%	0	0

Organisation [Dorset Heavy Horse & Pony Centre](#)
Address Verwood, Dorset
Contact Sarah Coombs
Tel No. 01202 824040
Registered? Non-Registered
Governing Body Private Ownership
Collections Held Includes a small collection of horse drawn implements
No of Objects -
Importance?

General	Local	Regional	National
-	-	-	-

Organisation [Exmouth Museum](#)
Address Sheppards Row, Exeter Road, Exmouth Devon EX8 1PW
Contact Tom Haynes
Tel No. -
Registered? Registered
Governing Body Exmouth Museum Management Committee
Collections Held Local history museum for the town and area
No of Objects 50
Importance?

General	Local	Regional	National
20	50	30	0

Organisation [Farmer Giles Farmstead](#)
Address Teffont Magna, Salisbury, Wiltshire SP3 5QY
Contact not known
Tel No. 01722 716338
Registered? Non-Registered
Governing Body Private Ownership
Collections Held Display of farm and rural life equipment as part of a working farm
No of Objects -
Importance?

	General	Local	Regional	National
	-	-	-	-

Organisation [Finch Foundry](#)
Address Sticklepath, Okehampton, Devon EX20 2NW
Contact Hugh Meller (Devon NT)
Tel No. 01837 840046
Registered? Provisional
Governing Body National Trust
Collections Held Water-powered forge making agricultural hand tools
No of Objects c200
Importance?

	General	Local	Regional	National
	20%	30%	30%	20%

Organisation [Gillingham Museum](#)
Address Chantry Fields, Gillingham, Dorset SP8 4UA
Contact Lyn Light
Tel No. 01747 823176
Registered? Registered
Governing Body Gillingham Local History Society
Collections Held Local history museum for the town and area
No of Objects 180
Importance?

	General	Local	Regional	National
	0	100%	0	0

Organisation [Gloucester Folk Museum](#)
Address 99-103 Westgate Street, Gloucester, Gloucestershire GL1 2PG
Contact Nigel Cox
Tel No. 01452 526467
Registered? Registered
Governing Body Gloucester City Council
Collections Held The social history collections of the City and the area
No of Objects 1000
Importance?

	General	Local	Regional	National
	0	40%	55%	5%

Organisation [Gloucester Transport Museum](#)
Address The Old Fire Station, Barbican Road, Gloucester, Gloucestershire GL1 2JF
Contact Richard Sermon
Tel No. 01452 526342
Registered? Non-Registered
Governing Body Gloucester City Council
Collections Held Transport history collection, including farm waggons
No of Objects -
Importance?

General	Local	Regional	National
-	-	-	-

Organisation [Helston Folk Museum](#)
Address 7 The Old Butter Market, Market Place, Helston, Cornwall TR13 8TH
Contact Martin Matthews
Tel No. 01326 564027
Registered? Provisional
Governing Body Kerrier District Council
Collections Held Local history museum for the town and area
No of Objects 800
Importance?

General	Local	Regional	National
0	10%	90%	0

Organisation [Holsworthy Museum](#)
Address Manor Offices, Holsworthy, Devon EX22 6JG
Contact Mrs E Curtis
Tel No. 01409 259337
Registered? Registered
Governing Body Holsworthy Museum Society Trust
Collections Held Local history museum for the town and area
No of Objects 300
Importance?

General	Local	Regional	National
0	100%	0	0

Organisation [Hornsby Mill](#)
Address Hornsby, Chard, Somerset
Contact not known
Tel No. 01460 63317
Registered? Non-Registered
Governing Body Private Ownership
Collections Held A working water mill including the Yesteryear Mill Workings Museum
No of Objects -
Importance?

General	Local	Regional	National
-	-	-	-

Organisation [Ilfracombe Museum](#)
Address Wilder Road, Ilfracombe, Devon EX34 8AF
Contact Sue Pullen
Tel No. 01271 863541
Registered? Registered
Governing Body Ilfracombe Museum Trust
Collections Held Local history museum for the town and area
No of Objects 20
Importance?

General	Local	Regional	National
0	100%	0	0

Organisation [Isles of Scilly Museum](#)
Address Church Street, St Mary's, Isles of Scilly TR21 0JT
Contact Steve Ottery
Tel No. 01720 422337
Registered? Registered
Governing Body Isles of Scilly Museum Association
Collections Held Museum for the Scilly Isles
No of Objects 20
Importance?

General	Local	Regional	National
-	-	-	-

Organisation [John Moore Countryside Museum](#)
Address 41 Church Street, Tewkesbury, Gloucestershire GL20 5SN
Contact Simon Lawton
Tel No. 01684 297174
Registered? Registered
Governing Body The Abbey Lawn Trust
Collections Held Local and natural history museum
No of Objects 23
Importance?

General	Local	Regional	National
0	100%	0	0

Organisation [Lackham Museum of Agricultural & Rural Life](#)
Address Wiltshire College (Lackham), Lacock, Chippenham, Wiltshire SN15 2NY
Contact Andrew Davies
Tel No. 01249 466800
Registered? Registered
Governing Body Lackham College Governing Body
Collections Held Large collection of agricultural history, including trades and manufacturers, agricultural machinery and rural crafts collection. Includes both the Lackham College Agricultural Museum and the former Museum of Wiltshire Rural Life at Avebury
No of Objects 3750 + 637 = 4387
Importance?

General	Local	Regional	National
0	80%	20%	0

Organisation [Lanreath Folk & Farm Museum](#)
Address Churchtown, Lanreath, Looe, Cornwall PL13 2NX
Contact John Facey
Tel No. not known
Registered? Non-Registered
Governing Body Private Ownership
Collections Held "A wealth of farming memorabilia" forms part of a large folk collection

No of Objects -
Importance?

General	Local	Regional	National
-	-	-	-

Organisation [Lawrence House Museum](#)
Address 9 Castle Street, Launceston, Cornwall PL15 8BA
Contact Jean Brown
Tel No. 01566 773277
Registered? Registered
Governing Body Launceston Town Council & Lawrence House Museum
Collections Held Local history museum for the town and area

No of Objects 65
Importance?

General	Local	Regional	National
0	80%	20%	0

Organisation [Lostwithiel Museum](#)
Address 16 Fore Street, Lostwithiel, Cornwall PL22 0BW
Contact Jeanne Jones
Tel No. 01208 872513
Registered? Registered
Governing Body Lostwithiel Museum Association
Collections Held Local history museum for the town and area

No of Objects 90
Importance?

General	Local	Regional	National
0	100%	0	0

Organisation [Lyn & Exmoor Museum](#)
Address St Vincent's Cottage, Market Street, Lynton, Devon EX35 6AF
Contact Ernest Mold
Tel No. 01598 752205
Registered? Registered
Governing Body North Devon District Council
Collections Held Local history museum for area

No of Objects >150
Importance?

General	Local	Regional	National
0	70%	30%	0

Organisation [Mangerton Mill](#)
Address Mangerton, Bridport, Dorset DT6 3SG
Contact Mr E Harris
Tel No. 01308 485224
Registered? Non-Registered
Governing Body Private Ownership
Collections Held Working water mill and museum of bygones
No of Objects -
Importance?

General	Local	Regional	National
-	-	-	-

Organisation [Market Lavington Museum](#)
Address Church Street, Market Lavington, Wiltshire
Contact Peggy Gye
Tel No. 01380 818736
Registered? Registered
Governing Body Market Lavington Museum Trust
Collections Held Local history museum
No of Objects 89
Importance?

General	Local	Regional	National
0	100%	0	0

Organisation [Mere Museum](#)
Address Barton Lane, Mere, Wiltshire BA12 6JA
Contact David Longbourne
Tel No. 01747 860546
Registered? Registered
Governing Body Mere Museum Committee
Collections Held Local history museum for the town and area
No of Objects 102
Importance?

General	Local	Regional	National
0	100%	0	0

Organisation [Milky Way Adventure Park](#)
Address Downland Farm, Clovelly, Devon EX39 5RY
Contact Trevor Stanbury
Tel No. 01237 431255
Registered? Non-Registered
Governing Body Private Ownership
Collections Held Various attractions forming an adventure park; includes the Pidler Countryside Collection
No of Objects -
Importance?

General	Local	Regional	National
-	-	-	-

Organisation [Mill House Working Cider Museum](#)
Address Owermoigne, Dorset DT2 8HZ
Contact Derek Whatmoor
Tel No. 01305 854887
Registered? Non-Registered
Governing Body Private Ownership
Collections Held Working museum of cider and cider making equipment
No of Objects -
Importance? **General** **Local** **Regional** **National**
 - - - -

Organisation [Morwellham Quay Museum](#)
Address Morwellham, Tavistock, Devon PL19 8JL
Contact John Goodrich
Tel No. 01822 833808
Registered? Registered
Governing Body Morwellham & Tamar Valley Trust
Collections Held Large open-air museum on River Tamar; social and industrial history and transport
No of Objects 127
Importance? **General** **Local** **Regional** **National**
 0 99% 1% 0

Organisation [Museum in the Park](#)
Address Mansion House, Stratford Park, Stratford , Stroud, Gloucestershire GL5 4AF
Contact Sue Hayward
Tel No. 01453 763394
Registered? Provisional
Governing Body Stroud District Council & Cowle Trust
Collections Held Agricultural and social history collections include the W E Duncan Young collection and the loan of the Lister Petter collection
No of Objects 2100
Importance? **General** **Local** **Regional** **National**
 0 95% 5% 0

Organisation [Museum of Dartmoor Life](#)
Address 3 West Street, Okehampton, Devon EX20 1HQ
Contact Maurie Webber
Tel No. 01837 52295
Registered? Provisional
Governing Body Dartmoor Museums Association
Collections Held Local and social history collections of Dartmoor
No of Objects >400
Importance? **General** **Local** **Regional** **National**
 0 100% 0 0

Organisation [Museum of Barnstaple & North Devon](#)
Address The Square, Barnstaple, Devon EX32 8LN
Contact Alison Mills
Tel No. 01271 346747
Registered? Registered
Governing Body North Devon District Council
Collections Held Wide range of collections covering North Devon
No of Objects c.50
Importance?

General	Local	Regional	National
0	95%	5%	0

Organisation [Museum of South Somerset](#)
Address Hendford, Yeovil, Somerset BA20 1UN
Contact Marion Barnes
Tel No. 01935 424774
Registered? Registered
Governing Body South Somerset District Council
Collections Held The District museum for the town and South Somerset
No of Objects 3000
Importance?

General	Local	Regional	National
0	80%	20%	0

Organisation [Newton Abbot Town Museum](#)
Address 2A St Paul's Road, Newton Abbot, Devon TQ12 2HP
Contact Felicity Cole
Tel No. 01626 201121
Registered? Registered
Governing Body Newton Abbot Town Council
Collections Held Local history museum for the town and area
No of Objects 20
Importance?

General	Local	Regional	National
0	80%	20%	0

Organisation [North Cornwall Museum & Gallery](#)
Address The Clease, Camelford, Cornwall PL32 9PL
Contact Sarah Holden
Tel No. 01840 212954
Registered? Non-Registered
Governing Body Private Ownership
Collections Held Collection of tools, waggons etc.
No of Objects -
Importance?

General	Local	Regional	National
-	-	-	-

Organisation [North Devon Farm Park](#)
Address Landkey, Barnstaple, Devon
Contact not known
Tel No. 01271 830255
Registered? Non-Registered
Governing Body Private Ownership
Collections Held Farm park with display of agricultural implements
No of Objects -
Importance?

General	Local	Regional	National
-	-	-	-

Organisation [North Devon Maritime Museum](#)
Address Odun House, Odun Road, Appledore, Devon EX39 1PT
Contact Pat Wiggett
Tel No. 01237 422064
Registered? Registered
Governing Body North Devon Museum Trust
Collections Held Local history museum for the area. NB: reserve collection of agricultural history not on display – see Part Three of this report
No of Objects >350
Importance?

General	Local	Regional	National
0	75%	25%	0

Organisation [Padstow Museum](#)
Address The Men's Institute, Market Place, Padstow, Cornwall
Contact Peta Venner
Tel No. 01841 532470
Registered? Registered
Governing Body Private Ownership
Collections Held Local history museum for the town and area
No of Objects >12
Importance?

General	Local	Regional	National
0	100%	0	0

Organisation [Perranzabuloe Folk Museum](#)
Address Oddfellows Hall, Ponsmere Road, Perranporth, Cornwall TR6 0BW
Contact Linda Miners
Tel No. 01872 573431
Registered? Registered
Governing Body Perranzabuloe Folk Museum Committee
Collections Held Local parish museum
No of Objects ?
Importance?

General	Local	Regional	National
0	100%	0	0

Organisation [Perry's Cider Mills](#)
Address Dowlish Wake, Ilminster, Somerset
Contact not known
Tel No. 01460 52681
Registered? Non-Registered
Governing Body Private Ownership
Collections Held Display and museum of farm, cider and rural life
No of Objects -
Importance?

General	Local	Regional	National
-	-	-	-

Organisation [Pewsey Heritage Centre](#)
Address Whatleys Old Foundry, Avonside Works, High Pewsey, Wiltshire SN9 5AF
Contact Michael Asbury
Tel No. 01672 562404
Registered? Deferred
Governing Body Pewsey Heritage Centre Board of Trustees
Collections Held Local history museum and heritage centre for Pewsey and the Vale of Pewsey
No of Objects 74
Importance?

General	Local	Regional	National
0	90%	10%	0

Organisation [Plymouth City Museum & Art Gallery](#)
Address Drake Circus, Plymouth, Devon PL4 8AJ
Contact Nicola Moyle
Tel No. 01752 304774
Registered? Registered
Governing Body Plymouth City Council
Collections Held The principal museum of the city museums and gallery service
No of Objects c.150
Importance?

General	Local	Regional	National
0	0	80%	20%

Organisation [Portland Museum](#)
Address 217 Wakeham, Portland, Dorset DT5 1HS
Contact Douglas Gyte
Tel No. 01305 821804
Registered? Provisional
Governing Body Weymouth & Portland Borough Council
Collections Held Local history museum for the Isle of Portland
No of Objects >20
Importance?

General	Local	Regional	National
-	100%	-	-

Organisation [Priest's House Museum of East Dorset Life](#)
Address 23-27 High Street, Wimborne Minster, Dorset BH21 1HR
Contact Emma Ayling
Tel No. 01202 882533
Registered? Registered
Governing Body Priest's House Museum Trust
Collections Held Social history museum for the town and area; includes a rural history gallery

No of Objects c.400
Importance?

General	Local	Regional	National
0	90%	0	0

Organisation [Purton Museum](#)
Address Purton Library, High Street, Purton, Wiltshire SN5 9AA
Contact Rick Dixon
Tel No. 01793 770648
Registered? Registered
Governing Body Purton & District Historical Society
Collections Held Local history museum, including "collection of agricultural hand tools"

No of Objects 50
Importance?

General	Local	Regional	National
0	100%	0	0

Organisation [Putlake Adventure Farm](#)
Address Langton Matravers, Swanage, Dorset
Contact Maria Dando
Tel No. 01929 422917
Registered? Non-Registered
Governing Body Private Ownership
Collections Held Farm includes display of farm implements

No of Objects -
Importance?

General	Local	Regional	National
-	-	-	-

Organisation [Red House Museum & Gardens](#)
Address Quay Road, Christchurch, Dorset BH23 1BU
Contact Jim Hunter
Tel No. 01202 482860
Registered? Registered
Governing Body Hampshire County Council/Dorset County Council
Collections Held Collections relating to the town and area

No of Objects 10
Importance?

General	Local	Regional	National
0	100%	0	0

Organisation [Royal Cornwall Museum](#)
Address River Street, Truro, Cornwall TR1 2SJ
Contact Anna Tyacke
Tel No. 01872 272205
Registered? Registered
Governing Body Royal Institution of Cornwall
Collections Held County museum for Cornwall
No of Objects 30
Importance?

General	Local	Regional	National
0	100%	0	0

Organisation [Salcombe Museum](#)
Address Old Council House, Market Street, Salcombe, Devon TQ8 8DE
Contact Ken Sharpington
Tel No. 01722 336272
Registered? Registered
Governing Body -
Collections Held Local history museum for the town and area
No of Objects 5
Importance?

General	Local	Regional	National
0	100%	0	0

Organisation [Salisbury & South Wiltshire Museum](#)
Address The King's House, 65 The Close, Salisbury, Wiltshire SP1 2EN
Contact Peter Saunders
Tel No. 01722 332151
Registered? Registered
Governing Body Salisbury & S Wiltshire Museum Trust
Collections Held Regional archaeology and social history museum
No of Objects >700
Importance?

General	Local	Regional	National
0	51%	43%	6%

Organisation [Saltash Heritage Museum](#)
Address 17 Lower Fore Street, Saltash, Cornwall
Contact David Coles
Tel No. 01752 848466
Registered? Registered
Governing Body Saltash Heritage Management Committee
Collections Held Local history museum for the town and area
No of Objects 30
Importance?

General	Local	Regional	National
0	100%	0	0

Organisation [Science Museum](#)
Address D4 Admin Office, Wroughton Airfield, Swindon, Wiltshire SN4 9NS
Contact Peter Meehan
Tel No. 01793 814466
Registered? Registered
Governing Body National Museum (Trustees of the Science Museum)
Collections Held Principal reserve store of the national museum collections, including agricultural history. Extensive large objects collection

No of Objects -
Importance?

General	Local	Regional	National
-	-	-	-

Organisation [Sheppy's Cider Farm Centre](#)
Address Three Bridges, Bradford on Tone, Taunton, Somerset TA4 1ER
Contact not known
Tel No. 01823 461233
Registered? Non-Registered
Governing Body Private Ownership
Collections Held Display of farm, cider and Country Life Museum

No of Objects -
Importance?

General	Local	Regional	National
-	-	-	-

Organisation [Sherborne Museum](#)
Address Abbeygate House, Sherborne, Dorset DT9 3BP
Contact E Webber
Tel No. 01935 812252
Registered? Registered
Governing Body Sherborne Museum Association
Collections Held Local history museum for the town and area

No of Objects 25
Importance?

General	Local	Regional	National
0	100%	0	0

Organisation [Shires Family Adventure Park](#)
Address Tredinnick, Wadebridge, Cornwall
Contact not known
Tel No. 01841 541215
Registered? Non-Registered
Governing Body Private Ownership
Collections Held An adventure centre displaying various implements, including farm waggons

No of Objects -
Importance?

General	Local	Regional	National
-	-	-	-

Organisation [Sid Vale Heritage Centre](#)
Address Church Street, Sidmouth, Devon EX10 8LY
Contact Ms M Carter
Tel No. 01395 516139
Registered? Registered
Governing Body -
Collections Held Local history museum for the town and area
No of Objects 20
Importance?

General	Local	Regional	National
0	100%	0	0

Organisation [Somerset Rural Life Museum](#)
Address Abbey Farm, Chilkwell Street, Glastonbury, Somerset, BA6 8DB
Contact David Walker
Tel No. 01458 831197
Registered? Registered
Governing Body Somerset County Council
Collections Held The principal rural life museum for the county of Somerset; includes a full range of interpretative displays on agricultural processes and equipment, local manufacturers etc.
No of Objects 3100
Importance?

General	Local	Regional	National
0	0	100%	0

Organisation [South Molton Museum](#)
Address Guildhall, South Molton, Devon EX36 3AB
Contact Sylvia Harrison
Tel No. 01769 572951
Registered? Registered
Governing Body South Molton Town Council
Collections Held Local history museum for the town and area
No of Objects >200
Importance?

General	Local	Regional	National
0	90%	10%	0

Organisation [Stapehill Abbey](#)
Address 276 Wimborne Road West, Stapehill, Ferndown, Dorset BH21 2EB
Contact John Pickard
Tel No. 01202 861686
Registered? Non-Registered
Governing Body Private Ownership
Collections Held Crafts and gardens centre including rural life museum
No of Objects -
Importance?

General	Local	Regional	National
-	-	-	-

Organisation [Sturminster Newton](#)
Address c/o Ruby Cottage, Church Lane, Sturminster Newton, Dorset
Contact Mrs A Moore
Tel No. not known
Registered? Provisional
Governing Body Sturminster Newton Museum Society
Collections Held Local history museum for the town and area
No of Objects <100
Importance?

General	Local	Regional	National
0	100%	0	0

Organisation [Swindon Museum & Art Gallery](#)
Address Bath Road, Swindon, Wiltshire SN1 4BA
Contact Robert Dickinson
Tel No. 01793 466556
Registered? Registered
Governing Body Swindon Borough Council
Collections Held The principal museum of the borough museums and gallery services; includes the Coate Agricultural Museum, opened at Coate Water Country Park in 1984 but now closed.
No of Objects >1000
Importance?

General	Local	Regional	National
0	85%	15%	0

Organisation [Teignmouth Museum & Historical Society](#)
Address 29 French Street, Teignmouth, Devon TQ14 8ST
Contact Beryl King
Tel No. 01626 777041
Registered? Registered
Governing Body Teignmouth Museum Management Committee
Collections Held Local history museum for the town and area
No of Objects 67
Importance?

General	Local	Regional	National
0	100%	0	0

Organisation [Thornbury & District Museum](#)
Address 4 Chapel Street, Thornbury, Bristol
Contact Vic Hallett/Mel Barnett
Tel No. 01454 857774
Registered? Provisional
Governing Body Thornbury & District Heritage Trust
Collections Held Local history museum for the town and area
No of Objects 1346
Importance?

General	Local	Regional	National
0	100%	0	0

Organisation [Time Machine](#)
Address Burlington Street, Weston Super Mare, Somerset BS23 1PR
Contact Nick Goff
Tel No. 01934 621028
Registered? Registered
Governing Body North Somerset Council
Collections Held Archaeology, local and social history museum for North Somerset
No of Objects 500
Importance?

General	Local	Regional	National
0	80%	20%	0

Organisation [Tiverton Museum](#)
Address St Andrew Street, Tiverton, Devon EX16 6PH
Contact John Leach
Tel No. 01884 256295
Registered? Registered
Governing Body Tiverton & Mid-Devon Museum Trust
Collections Held Large collection for the town and mid-Devon; includes farm wagon collection, tools and implements etc
No of Objects 1085
Importance?

General	Local	Regional	National
0	50%	49%	1%

Organisation [Topsham Museum](#)
Address 25 The Strand, Exeter, Devon EX3 0AX
Contact Mr D Clement
Tel No. 01392 873244
Registered? Registered
Governing Body Topsham Museum Society
Collections Held Local history museum for the town and area
No of Objects 14
Importance?

General	Local	Regional	National
0	100%	0	0

Organisation [Torquay Museum](#)
Address 529 Babbacombe Road, Torquay, Devon TQ1 1HG
Contact Ros Palmer
Tel No. 01803 293975
Registered? Registered
Governing Body Torquay Natural History Society
Collections Held Regional museum for Torbay; includes the Laycock collection of Devon agricultural history
No of Objects -
Importance?

General	Local	Regional	National
-	-	-	-

Organisation [Torrington Museum](#)
Address Town Hall, High Street, Torrington, Devon EX38 8HN
Contact Mr B Cole
Tel No. 01805 624324
Registered? Provisional
Governing Body Torrington & District Society
Collections Held Local history museum for the town and area
No of Objects <100
Importance?

General	Local	Regional	National
0	100%	0	0

Organisation [Tortworth Visitor Centre @ HMP Leyhill](#)
Address HMP Leyhill, Leyhill, Wotton-under-Edge, Gloucestershire GL12 8BT
Contact Colin Lennox
Tel No. 01454 260681
Registered? Non-Registered
Governing Body HM Prisons Board
Collections Held Collection of implements refurbished by the prison community
No of Objects -
Importance?

General	Local	Regional	National
-	-	-	-

Organisation [Totnes Elizabethan Museum](#)
Address 70 Fore Street, Totnes, Devon TQ9 5RU
Contact Rachel Silverson
Tel No. 01803 863821
Registered? Registered
Governing Body Totnes Museum Trust
Collections Held Local and social history museum for the town and area
No of Objects >50
Importance?

General	Local	Regional	National
0	50%	40%	10%

Organisation [Trevarno Estate](#)
Address Trevarno Manor, Sithney, Cornwall TR13 0RU
Contact Marye Porter
Tel No. 01326 574274
Registered? Non-Registered
Governing Body Private Ownership
Collections Held Collection of carts and farm tools etc. in the barn
No of Objects -
Importance?

General	Local	Regional	National
-	-	-	-

Organisation [Trowbridge Museum](#)
Address The Shires, Court Street, Trowbridge, Wiltshire BA14 8AT
Contact David Tucker
Tel No. 01225 751339
Registered? Registered
Governing Body Trowbridge Town Council
Collections Held Local, social and industrial history of the town and area
No of Objects 100
Importance?

General	Local	Regional	National
0	100%	0	0

Organisation [Wareham Town Museum](#)
Address East Street, Wareham, Dorset
Contact Michael O'Hara
Tel No. 01929 553448
Registered? Registered
Governing Body Wareham Town Council
Collections Held Local history museum for the town and area
No of Objects 100
Importance?

General	Local	Regional	National
0	100%	0	0

Organisation [Waterfront Museum](#)
Address 4 High Street, Poole, Dorset BH15 1BW
Contact Sue Beckett
Tel No. 01202 262600
Registered? Registered
Governing Body Borough of Poole
Collections Held Principal museum of the borough museum and archives service
No of Objects <20
Importance?

General	Local	Regional	National
0	100%	0	0

Organisation [Wayside Folk Museum](#)
Address Zennor, St Ives, Cornwall TR26 3DA
Contact Michael Robinson
Tel No. 01736 796945
Registered? Non-Registered
Governing Body Private Ownership
Collections Held Local history collection from the parish and immediate area
No of Objects -
Importance?

General	Local	Regional	National
-	-	-	-

Organisation [Wells Museum](#)
Address 8 Cathedral Green, Wells, Somerset BA5 2UE
Contact Estelle Jakeman
Tel No. 01749 673477
Registered? Registered
Governing Body Wells Museum Trust
Collections Held Local history museum for the town and area
No of Objects <50
Importance?

General	Local	Regional	National
0	50%	50%	0

Organisation [West Somerset Rural Life Museum](#)
Address The Old School, Allerford, Somerset TA24 8HN
Contact Mary White
Tel No. 01643 862529
Registered? Registered
Governing Body West Somerset Rural Life Museum Association
Collections Held Local and rural history; includes a diary in its displays
No of Objects 317
Importance?

General	Local	Regional	National
0	100%	0	0

Organisation [Weymouth Museum](#)
Address Brewers' Quay, Hope Square, Weymouth, Dorset DN4 8TR
Contact Rodney Alcock
Tel No. 01305 777622
Registered? Deferred Registration
Governing Body Weymouth & Portland Borough Council/Brewers' Quay
Collections Held Local history collections from Weymouth and south Dorset
No of Objects 10
Importance?

General	Local	Regional	National
0	50%	50%	0

Organisation [Wiltshire Heritage Museum](#)
Address 41 Long Street, Devizes, Wiltshire SN10 1NS
Contact Gordon Chancellor
Tel No. 01380 727369
Registered? Registered
Governing Body Wiltshire Archaeological & Natural History Society
Collections Held Regional archaeology and social history museum
No of Objects <300
Importance?

General	Local	Regional	National
0	100%	0	0

Organisation [Winchcombe Folk & Police Museum](#)
Address Old Town Hall, High Street, Winchcombe, Gloucestershire GL54 5LJ
Contact Barbara Edward
Tel No. 01242 609151
Registered? Registered
Governing Body Winchcombe Town Trust
Collections Held Local history museum for the town and area with specialist collection of police history

No of Objects >75
Importance?

General	Local	Regional	National
0	100%	0	0

Organisation [Working Shire Horses and Carriage Museum](#)
Address Lower Gryllis Farm, Treskillard, Redruth, Cornwall
Contact Harry Gotts
Tel No. 01209 713606
Registered? Non-Registered
Governing Body Private Ownership
Collections Held Shire horse centre with displays on yesterday's farming

No of Objects -
Importance?

General	Local	Regional	National
-	-	-	-

Organisation [World of Country Life](#)
Address Sandy Bay, Exmouth, Cornwall EX8 5BU
Contact Caroline Lee
Tel No. 01395 274533
Registered? Non-Registered
Governing Body Private Ownership
Collections Held Collection of agricultural implements and equipment

No of Objects -
Importance?

General	Local	Regional	National
-	-	-	-

Organisation [Wotton Heritage Centre](#)
Address The Chipping, Wotton Under Edge, Gloucestershire GL12 7AD
Contact Beryl Kingan
Tel No. 01453 521541
Registered? Registered
Governing Body Wotton Under Edge Historical Society
Collections Held Local history museum for the town and area

No of Objects 44
Importance?

General	Local	Regional	National
0	100%	0	0

Note: Corrections and updated information, as well as new entries for this section would be welcomed by South West Museums Council

Published in April 2001 by

South West Museums Council
Hestercombe House
Cheddon Fitzpaine
Taunton
Somerset TA2 8LQ

ISBN: 0-9513531-8-7



INVESTOR IN PEOPLE